



c/o Burrard Yacht Club
 10 Gostick Place
 North Vancouver
 B.C. V7M 3G3

"Representing over 50 Member Clubs"

"Provincial Boat Havens"

Early in the 1990's The Council of B.C. Yacht Clubs through its members, embarked on formulating a catalogue of anchorages throughout the coast of British Columbia. A total of 126 locations were finally decided and their location noted.

There was substantial assistance from Provincial Government departments associated with coastal issues. About 1996 Provincial Government Ministers were presented with this catalogue in the form of a proposal requesting that these locations be officially recognized and preserved as Safe Haven Anchorages. Intended for the specific use of small vessel where there would be reasonable confidence of secure anchoring on arrival and a peaceful night.

Any process involving Government is inclined to be a lengthy undertaking but progress has been made. Every one of the 126 P.B.H. locations are now digitally recorded on maps used by Government agencies but to date (2006) not all are adequately protected from other uses.

There are many anchorages through out the B.C. coast and several excellent publications giving their location and desirability that are also worthy of protection and preservation. This catalogue is but a few and intended only as a guide to assist in planning a cruise.

Regardless of your navigational aids never leave port without authorized nautical charts and remember to let others know of your intentions. The Captain must use discretion at all times.

To assist a small vessel skipper **A. B. C.** identifies these sites.

A. Destination Harbors.

These harbors are located at strategic intervals; approximately one day travel apart, and provide maximum shelter from most weather conditions and possible long-term anchorage.

B. Settled weathers overnight Anchorage.

Weather permitting, these give good protection,

C. Scenic, Temporary or Emergency Anchorage.

Varying degrees of protection depending on weather conditions. Some of these sites are identified for their scenic value and not always suitable as anchorage. The emergency locations are noted as. Harbour of refuge.

Except for special locations all foreshore and beaches to the High High Water line in B.C. are Crown Lands and permission to go ashore is not required. There is though a requirement when visiting a First Nation site. If possible seek permission from the appropriate local Indian Band. Take care and respect these sites. Taking any artifact is a serious offence. Please respect their culture.

Over time Nautical Charts are updated and improved and given a new identification number even though it's roughly the same area as the previous publication. This is why there are more than one Chart number in the description.

Some of these Boat Havens have some form of commercial activity. This is because at the time this anchorage was recognized as a Haven there were leases previously registered.

These leases expire after a set period of time. You could find on arrival you have the place to yourself, if so pick the best spot. On the other hand you might have to share.

Cruise carefully.



**Provincial Boat Haven's Criteria.
These Havens meet some or all of the following.**

1. Portions of small bays or coves along marine travel routes that the transiting boater considers vital to their needs, either as safe harbours of refuge or destination waypoints
2. Sufficient water lot reserves to permit safe anchorage in depths suitable for small craft.
3. Holding anchorages adjacent to navigational hazards such as strong tidal passages and take off points for crossing exposed waters etc.
4. Sites are spaced where practicable, approximately a days travel apart (30 miles) bearing in mind the slow speed of sailing craft and the fact that in general boaters confine themselves to daylight travel.

Other desirable features could include:

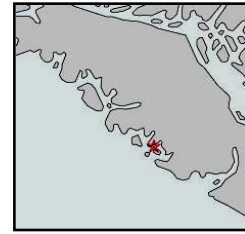
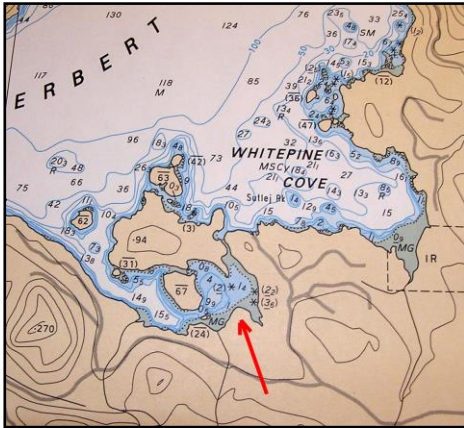
1. Availability of potable water.
2. Adjacency to shore side facilities e.g. beaches, lakes, swimming, trails, camping areas, shell fishing etc.
3. Foreshore suitable for kayaks and canoeists overnight stops
4. Proximity to sites of particular interest such as waterfalls, spectacular scenery, historic sights, hot springs, archeological sites, sports fishing, etc.

**These mini charts are for information only. Not for navigation.
Having up to date large-scale charts for exploring this coast is essential.**

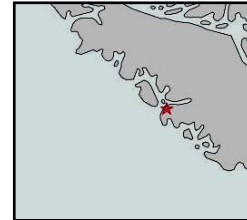
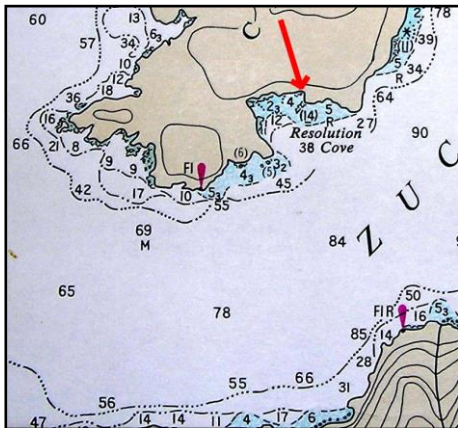
Generally speaking anchoring north of 51N. Requires longer rode especially in the inlets and fiords. Have at least three hundred feet. Occasionally a stern line to shore is advisable.



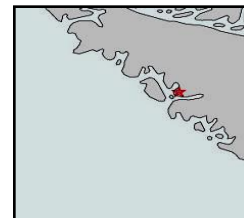
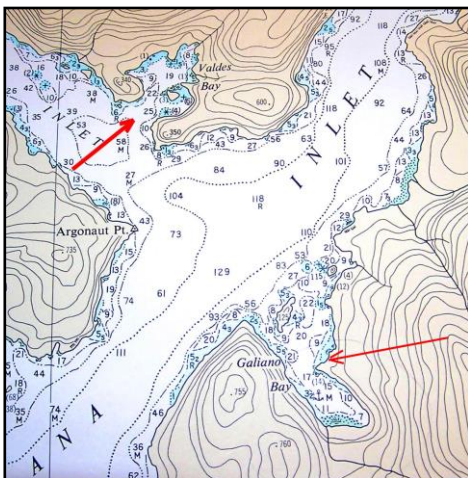
West Coast Vancouver Island



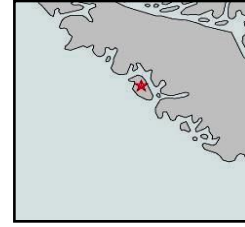
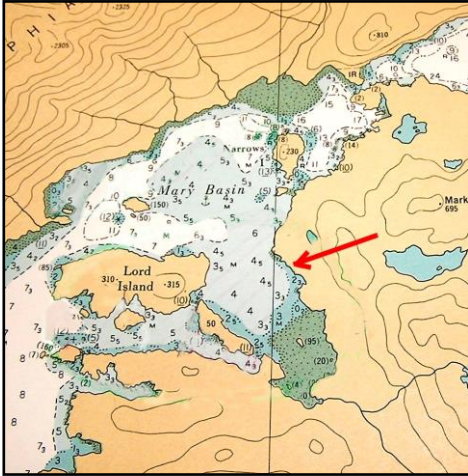
- 1. Unnamed Cove. A. Clayquot Sound.** Charts 3603-73
 49.17.8N - 125.58.3W. SW of Whitepine Cove.
 Fresh water available.
 A secure anchorage off Herbert Inlet.
 Enter South of Island 94. Anchor East of Island 67.



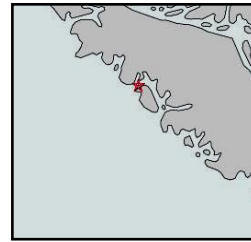
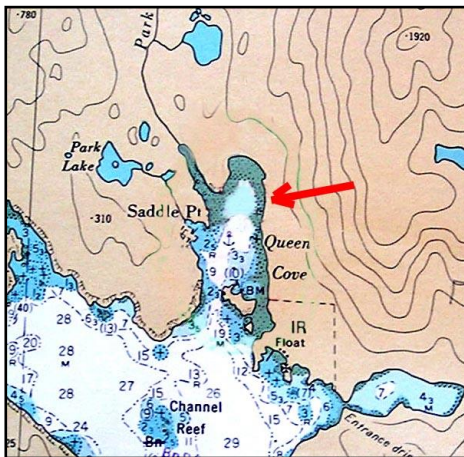
- 2. Resolution Cove. C. Nootka Sound.** Chart 3664-75.
 49-36.N. 126-31W.
 A historic site only. Not a good anchorage. South end of the
 Clerke Peninsula of Bligh Island.
 Don't forget to visit Friendly Cove at Yuquot just across
 Nootka Sound.



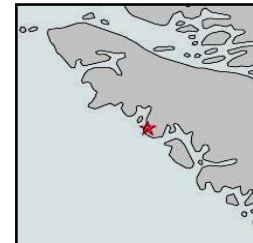
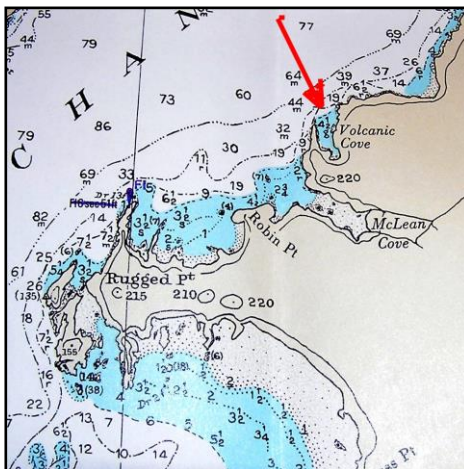
- 3. Valdes Bay. B.C. Nootka Sound.** Chart 3675.
 49-44N 126-29W.
 Turn to port off Tlupana Inlet into Hisnit Inlet to find the
 anchorage immediately to starboard.
 Fish hatchery and float homes may occupy the N.W. corner.
 Anchorage is suggested in the S.E. corner. Fair weather only
 Fresh water available. An alternative is Galliano Bay to the S.E.



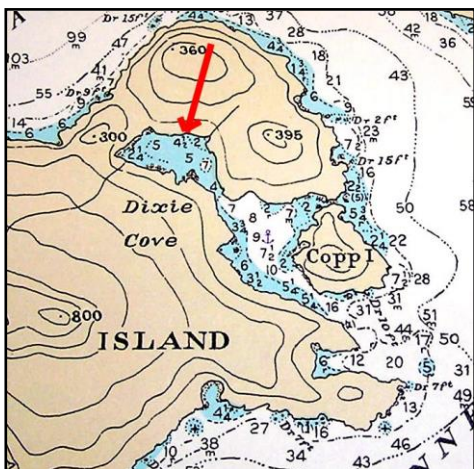
- 4. Mary Basin. A. Nootka Sound.** E. of Lord Island.
 Chart 3663-76. 49-47N. 126-50W.
 Excellent traditional anchorage and beach area in Nuchatlitz Inlet.
 If you are feeling adventurous a careful dinghy exploration of the N.E. Inner Basin might be interesting.



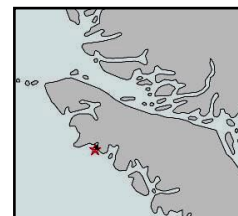
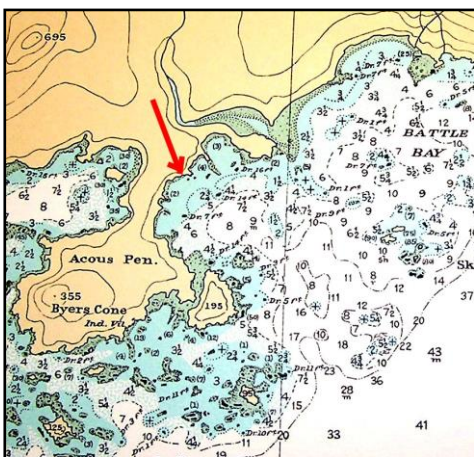
- 5. Queen Cove. A. Nootka Sound.** Charts 3663-76.
 49-53N. 126-59W.
 A most weather sheltered anchorage, attractive surroundings with some beach access. The entire upland and Reserve is private. Ask permission to explore up the river.



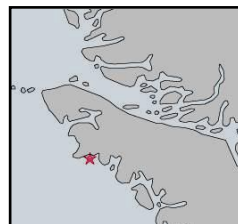
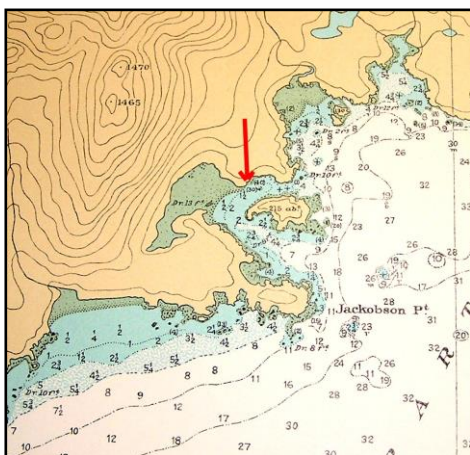
- 6. Volcanic Cove. B. Nootka Sound.** Chart 3682.
 49-59N 127-14W.
 A tiny anchorage immediately E. of Rugged Point at the entrance of Kyuquot Channel. There is access to foreshore and upland including an overland trail to McLean Cove. Safe anchorage in most weathers for only two to three boats. See Dixie Cove, it's not much further.



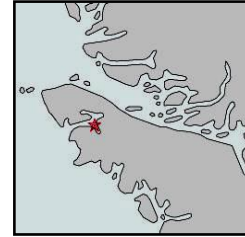
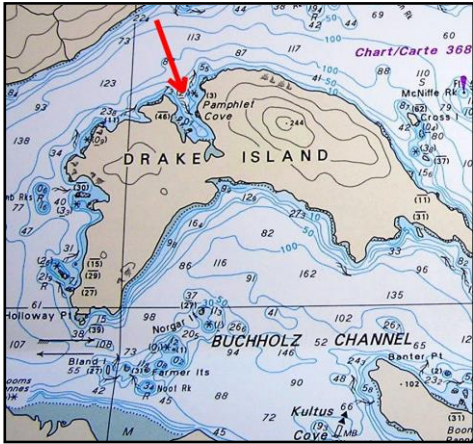
- 7. Dixie Cove. A. Clayoquot Sound. Chart 3682.**
 50-03N 127-12W.
 A very safe anchorage at the top end of Hohoae Island off
 Pinace Channel.
 Surrounded by protected Park. Fresh water available.



- 8. Battle Bay. B. Checkleset Bay. Chart 3683.**
 50-07N 127-35.6W.
 Fresh water up the river and a place to go ashore for
 walks along the beach. The anchorage is shallow,
 watch for rocks. If there's concern with weather go across to
 the Bunsby Islands. There are quiet anchorages off Gay
 Passage. See Columbia Cove. Provincial Park.



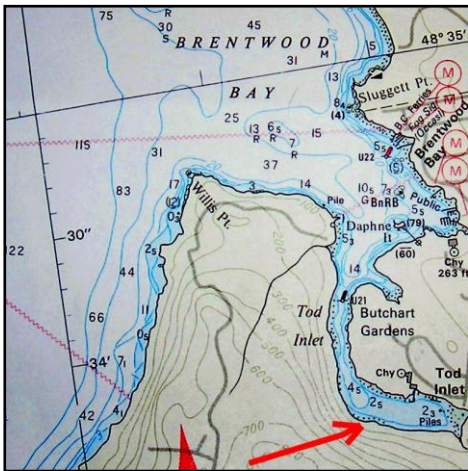
- 9. Columbia Cove. A. Nasperti Inlet. Chart 3683.**
 50-08N 127-41W.
 This is quite a small anchorage with limited swinging room
 and subject to high winds coming down off the Brooke
 Peninsula Mountains, it's best to use the large mooring buoys.
 Expect to share. The head dries.
 Provincial Park.



10. Pamphlet Cove. A. Quatsino Sound. Chart 3679-17.
50 31N 127 39W.

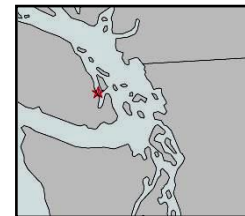
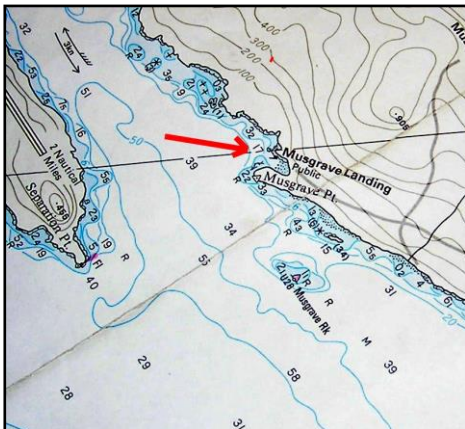
In Quatsino Sound on the N. shore of Drake Island. There are other suitable anchorages nearby. Supplies might still be available at Winter Harbour in Forward Inlet at the entrance of Quatsino Sound. But due to the down turn of commercial fishery this is doubtful.

East Vancouver Island & Georgia Straits



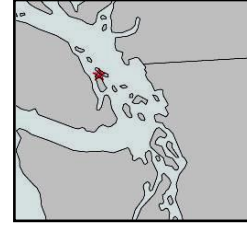
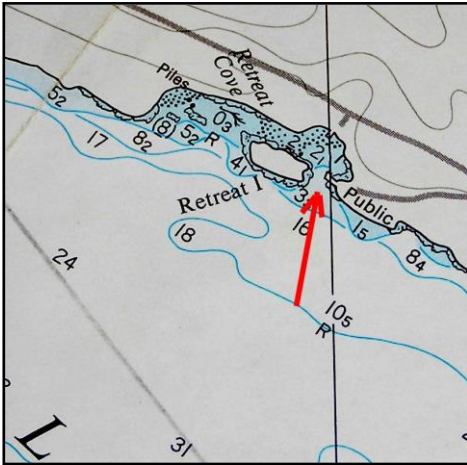
11. Tod Inlet. A. Saanich Inlet. Chart 3441-49-62.
48-34N. 123-28W.

The entrance to this safe anchorage is in southern Brentwood Bay. Butchart Gardens is within easy walking distance. There is bus service to Victoria and Sidney. Provincial Park.



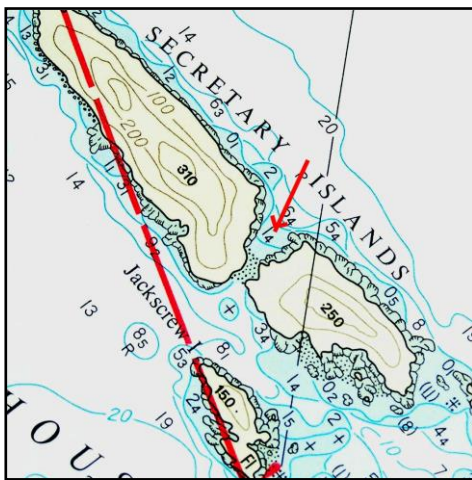
12. Musgrave Landing. A. Satellite Channel. Chart 3441.
48-45N. 123-33 W.

A tiny notch on the West of Saltspring Island. A housing development has taken over what was the anchorage but there is room for several boats at the public wharf. Subject to wash from passing vessels.



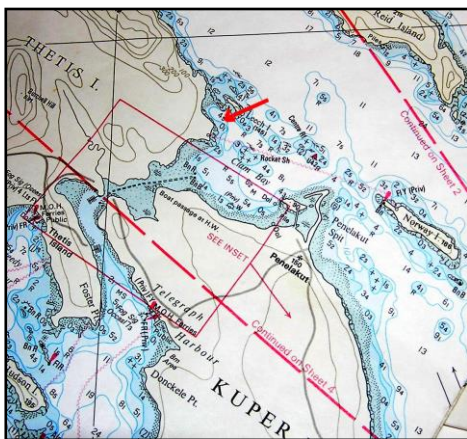
13. Retreat Cove. C. Trincomali Channel. Chart 3310-3442.
48-56N. 123-30W.

A very small anchorage behind Retreat Island. There is a public wharf but it's usually crowded with local boats. An alternative is Wallace Island not far away. A public park. Conover Cove has a wharf for several boats and some room to anchor with a stern line. Watch your sounder when entering slowly at low tide.



14. Secretary Islands. C. Trincomali Channel. Chart 3442.
48-57N. 123-35W.

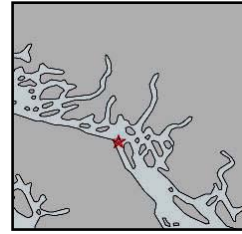
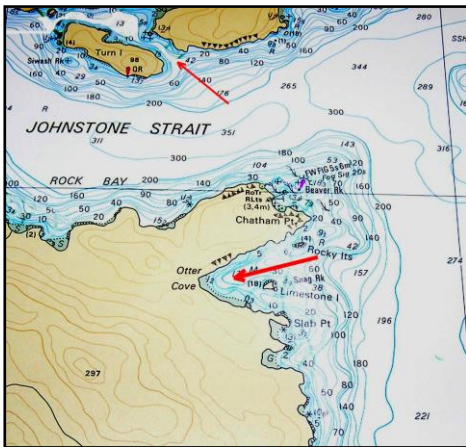
Situated between the two Secretary Island on the Northern side and is a handy nook in most weathers but is vulnerable to NW winds. The upland is private property. Refuge only.



15. Clam Bay. B.C. Trincomali Channel. Chart 3310. 3442-3.
48 59.5N. 123 39W. Settled weather only.

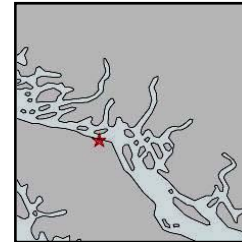
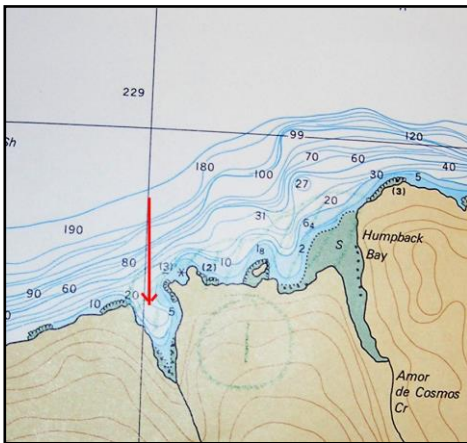
Room for a few boats the upland of Thetis is private. Kuper Island is Reserve Land. A dinghy trip through the gap into Telegraph Harbour for limited supplies at the marina. Best done on a rising tide incase you miss the dredged channel. Not recommended for deeper draft vessels.

Johnston Strait to Cape Caution, Vancouver Island & B.C. Mainland.



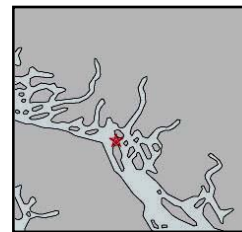
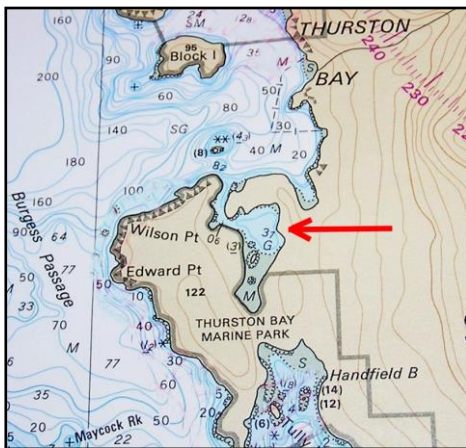
19. Otter Cove. C. Just below Chatham Point. Chart 3539
50-19N 125-27W.

A place to wait out Johnston Strait weather. The North shore is best for entering. Anchor deep into the cove. The bottom drops off quickly and is inclined to be foul. Use a trip line. The immediate upland is Provincial Park. An alternative anchorage is behind Turn Island. Refuge only.



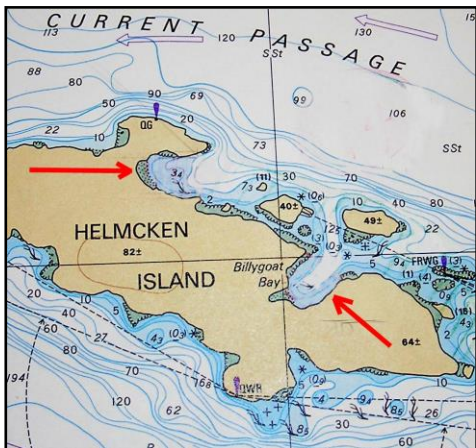
19a. No Name Cove. C. Chart 3536-44-66
50-22N. 125-42W.

East Johnston Strait. West of Humpback Bay.
A small harbour of refuge only.

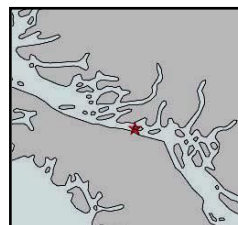
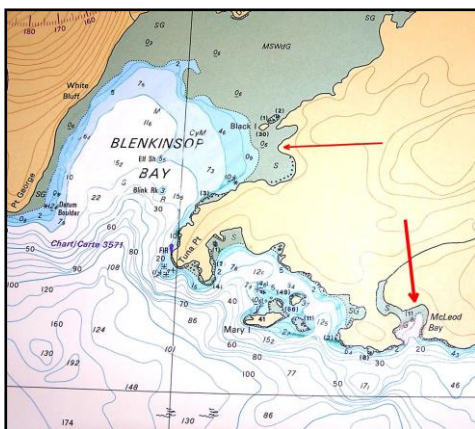


20. Thurston Bay Lagoon. A. Nodales Channel. Chart 3539-43.
50 22N. 125 19W.

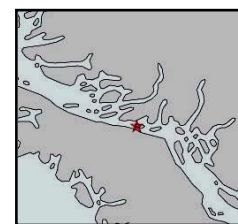
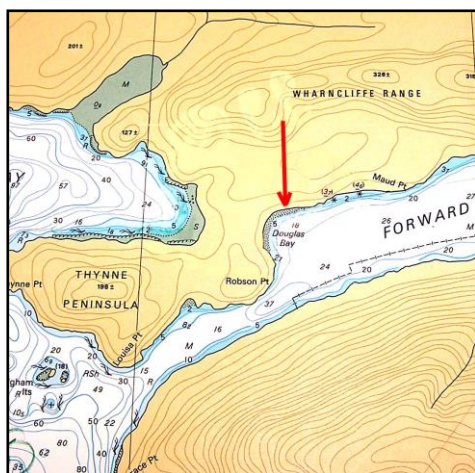
An excellent anchorage. Entry is in the south of Thurston Bay and gives the impression of being a dead end, the turn into the lagoon is not visible until you're close. There's a sill to cross so watch your sounder. South & West upland is Provincial Park



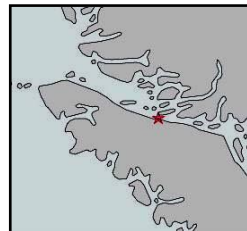
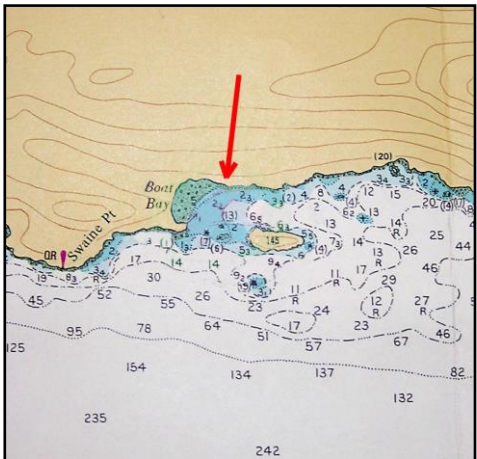
21. Helmcken Island Anchorages. B. C. Chart 3544.
 50-24N. 125-52W.
 Both are quite small but there is room for others using a Stern line. There are strong tides both sides of the island. Enter the east bay between islands marked 40 & 41.



22. McLeod Bay. C. Johnston Straits. Chart 3544.
 50-28N. 125-59W.
 A harbour of Refuge. Not pretty because of former logging operations. There might be logs stored. The bottom is possibly fouled. Watch your sounder. Blenkinsop Bay is an alternative.

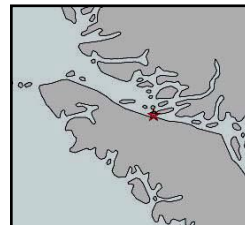
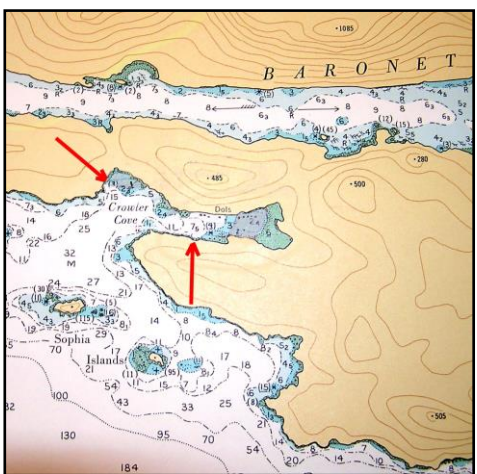


23. Douglas Bay. B. Forward Harbour. Chart 3515-44-95.
 50-29N. 125-45W.
 Off Wellbore Channel. Douglas Bay is a popular anchorage. Bears are attracted to the garbage the ill informed leave on the shore. Earmarked as Provincial Park.



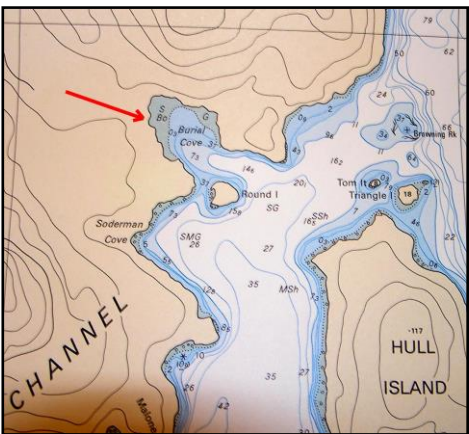
24. Boat Bay. Johnston Straits. B. Chart 3545-46-68-96.
50-31N. 126-34W.

This can be a welcome refuge especially in a strong westerly. Robson Bight is just across Johnston Strait. Be aware of the Orca Whale protected area.



25. Crowler Cove. B. Johnston Strait. Chart 3545-46-68-96.
50-32N. 126-37W.

Two small anchorages here. Very welcome in an easterly.



26. Burial Cove. B. C. Chart 3564.
50-33N. 126-13W.

Off Havannah Channel NW of Hull Island. Several private homes. The bottom shelves quickly at the head of the bay. It's not much further to Cutter Cove or Minstrel Island and Lagoon Cove.



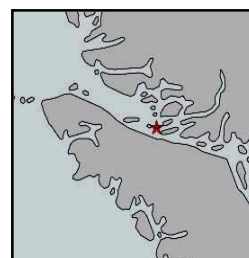
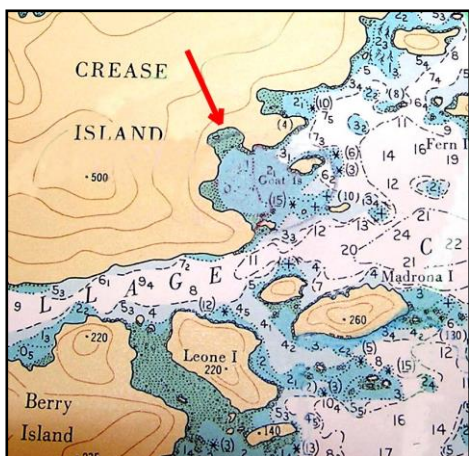
27. Potts Lagoon. A. Chart 3545-46-68-96.

50-33.9N. 126-27.2W.

Two anchorages, the smaller is ideal for easterlies.

The lower can be breezy but the holding is good.

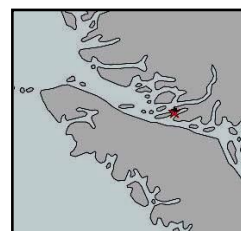
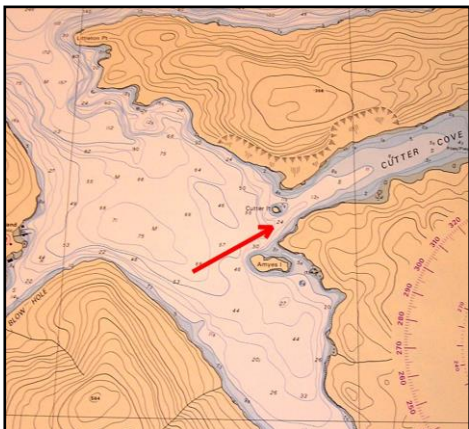
Keep island marked 35 to port as you enter. There is Kelp at the entrance so watch your sounder.



28. Crease Island Anchorage. A. Chart 3545-68-96

50-36.9N. 126-38.6W.

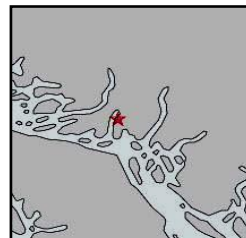
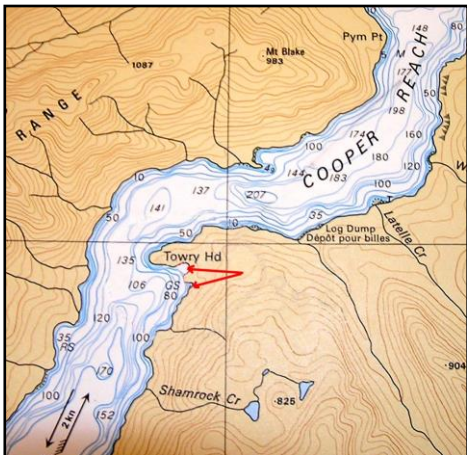
A popular anchorage in a strong westerly. A good location for dinghy exploring. Enter from the east between Crease and Goat Island. Watch your sounder. Most upland is Provincial Park. Visit Mamalilaculla, an abandoned First Nations village on Village Island. The local Band give guided tours.



29. Cutter Cove. A. Chart 3545-64.

50-37N. 126-15W.

A good anchorage for most weathers. Watch the depth. Minstrel Island might have limited supplies. Through the BlowHole is Lagoon Cove anchorage and Marina.

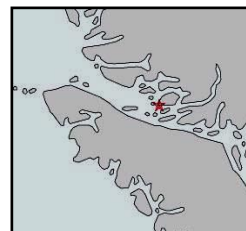
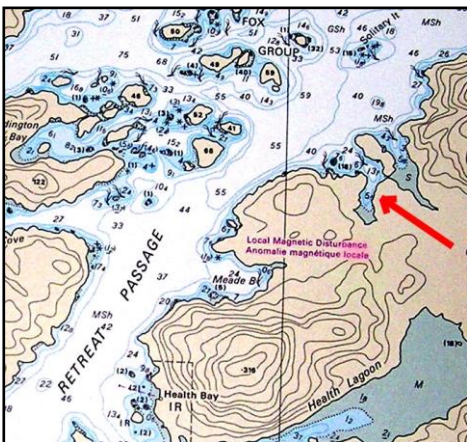


30. Towry Head. C. Chart 3543-92-95.

50-39.7N. 125-30.6W.

Loughborough Inlet, Just before entering Cooper Reach is Towry Head. Just two tiny bays. Like most of the mainland fiord inlets they are subject to heavy inflow or outflow winds even on calm days.

A scenic area but difficult to advise anchorages.

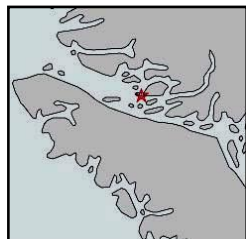


31. Bootleg Cove. A. Chart 3515-46-76.

50-42.8N. 126-34.2W.

A land locked anchorage. There's the impression when approaching it's not there.

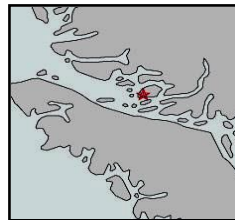
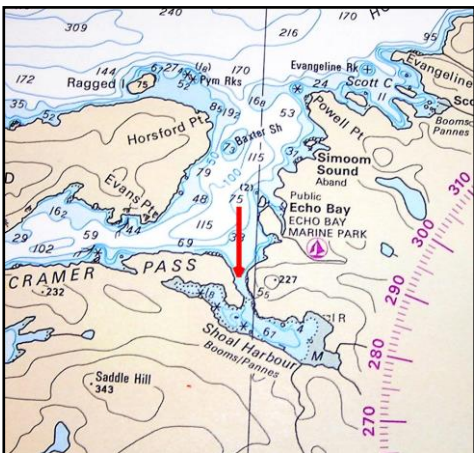
The head dries at low tide. Watch your sounder.



32. Waddington Bay. A. Chart 3515-46-76.

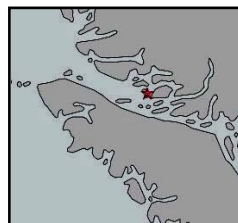
50-43N. 126-37W.

A well-protected anchorage, The wind can blow through but the holding is good. Study your chart carefully to find the way in. Most upland is Provincial Park



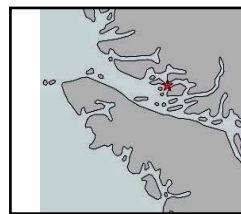
31. Shoal Harbour. B. Chart. 3515-76.
50-44.3N 126-30.3W.

A sheltered anchorage, the entrance has shallows, as does the inside area so care is needed. The holding is good and is handy to Echo Bay where supplies are available. The bottom could have snags from earlier logging activity.



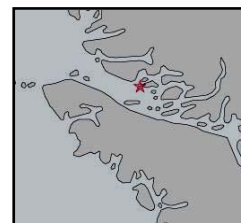
34. Eden Island. N.E. Cove. A. Chart 3515-76.
50-45.4N. 126-39.3W.

A pleasant and a safe anchorage. Most of the upland is steep and high. A small segment at the head of the bay is Provincial Park.



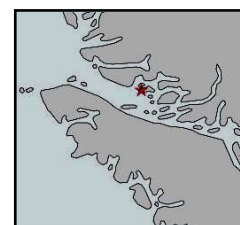
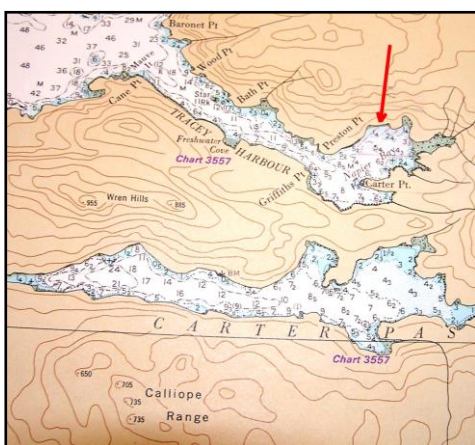
33. Laura Bay. B. Chart 3515-76.
50-49.4N. 126-34.1W.

Tucked in behind Trivett Island is the preferred location.



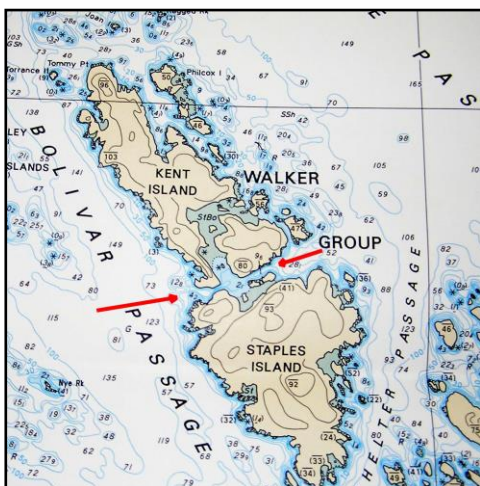
36. Dickson Island. N.E. Cove. B. Chart 3547-70-96.
50-50.3N. 126-55.5W.

Dickson Island is Reserve Land but not known to be occupied. Visitors might be asked not to go ashore. A popular anchorage when fishing is good but small and subject to westerly winds. If too busy try Napier Bay.



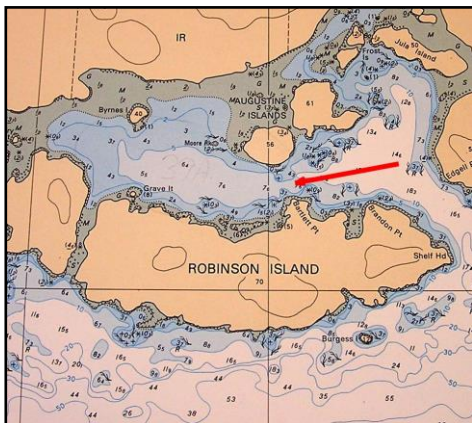
37. Napier Bay. A. Chart 3547-70-96.
50-51N 126-51.2W.

At the end of Tracey Harbour. This used to be a logging community but has been gone for a while. There may be some float homes still. The bottom could be fouled. There was mention of a water line across the bay so look for some indication on the shore. The location is vague.



38. Walker Group Anchorage. A-B. Chart 3549-97.
50-53.9N. 127-31.8W.

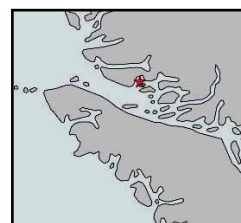
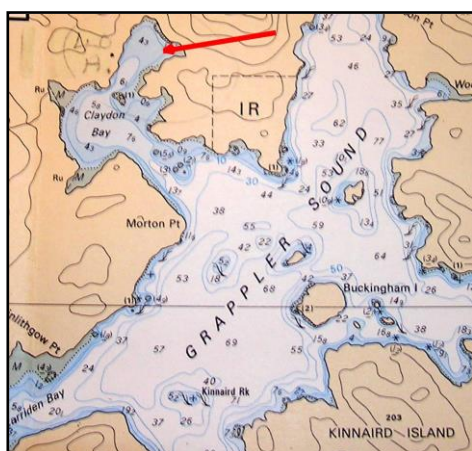
When crossing Queen Charlotte Straits and there's need to seek shelter this is one of only few places to hide. Careful entry is possible from the East or West.



41. Blunden Harbour. A.B. Chart 3548-61-97.

50 54n. 127 17W.

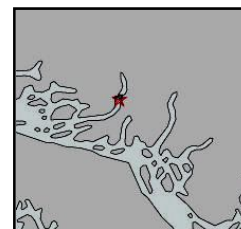
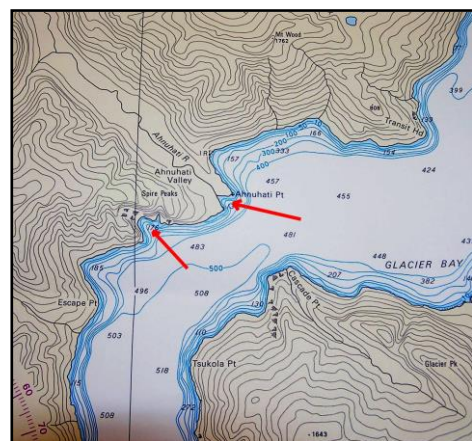
Enter between Robinson and Edgel Islands. Turn to port keeping Robinson Island to Port. The anchorage has good holding. This is Reserve Land with remnants of an abandoned First Nation village.



39. Claydon Bay. A. Chart 3547-70.

50-56.3N 126-53.4W.

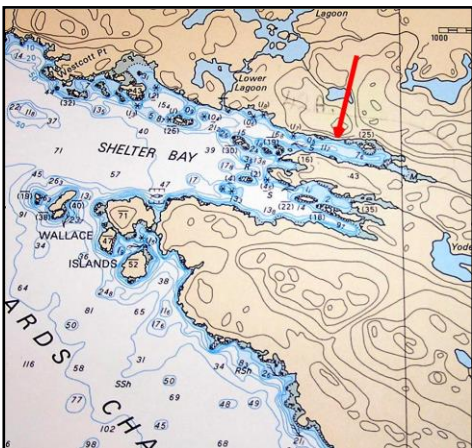
Enter on the west side of the small islands at the entrance. Claydon Bay is well situated as a base when fishing is good. Sullivan Bay is close for basic supplies and fuels or exploring Grappler and Mackenzie Sound through Kenneth Passage.



27. Ahnuhati Point. C. Knight Inlet. Chart 3515-78.

50-53.4N 125-38.1W.

Exploring these deep inlets is very pleasant but due to the depths anchoring is hardly possible. Glendale Cove looks tempting but is subject to the strong out-flow winds that are common. These two tiny nooks opposite Glacier Bay might offer some shelter. Refuge only.



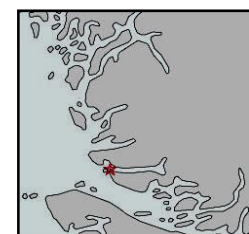
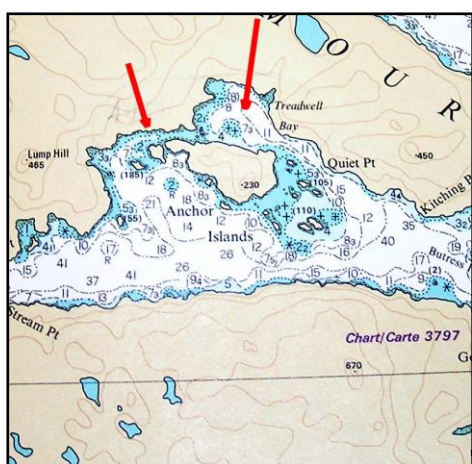
42. Shelter Bay. A-B. Chart 3548-49-97.
50-58N. 127-27W.

An excellent anchorage in south or east winds but does have some swells coming in with the west to north west weather. Go in as far as depth and swing room will allow. There is also a small nook to the west just before Westcott Point.



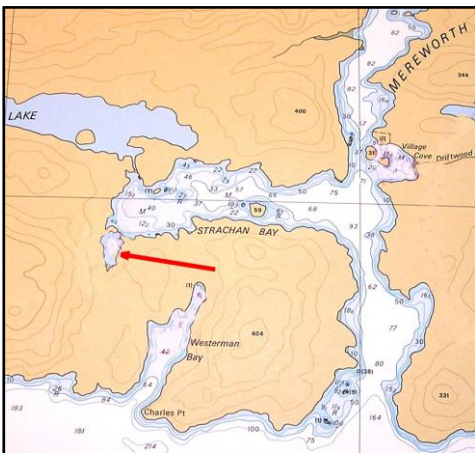
43. Miles Inlet. A. Chart 3549-50-51-97.
51.04N. 127-34.7W.

A favoured anchorage when heading north past Cape Caution. The channel leading in is narrow but navigable. The anchorage is at the T-junction. Both arms are shallow. The commercials like this anchorage so expect company in the fishing season.



44. Treadwell Bay. A. Chart 3548-49-50-51-52-97.
51-06N 127-32.2W.

Favour the East Side by Quiet Point when approaching. There is also good shelter behind the West side of Anchor island. Have Islet #56 to starboard while entering. It dries between the two anchorages.



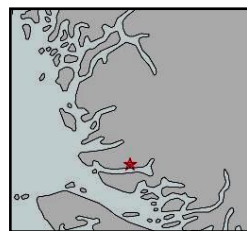
country.



45. Strachan Bay A. Chart 3552.

50-09.6N 127-28.3W.

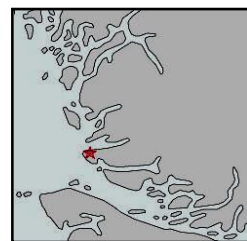
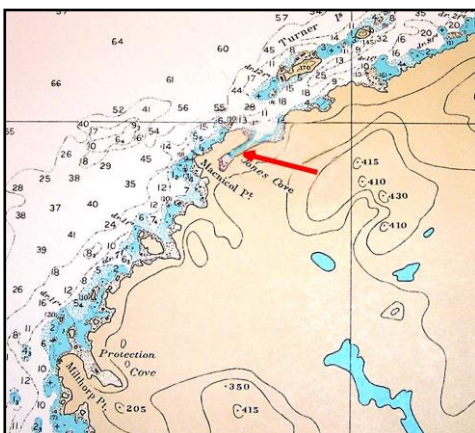
This anchorage is the lagoon at the western end of the bay. It has no name unless there is one known to local folk. The entrance is narrow so use care. This is Grizzly Bear



46. Peet Bay. A. Chart 3552.

51-09.8N. 127-04.2W.

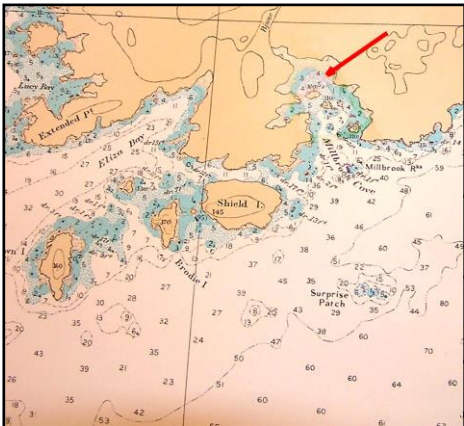
Inside the Nakwakto Rapids there is little rise and fall of tide making it possible to stern tie closer to shore than usual. Peet Bay is fairly deep so tuck in as far as practical into the nook and stern tie. Most wind passes on the outside.



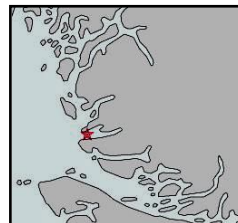
47. Jones Cove. B. Chart 3550-97-3776.

51-15N 127-45W.

Jones Cove is the first reasonable anchorage after Cape Caution if there's a need. Situated at the entrance to Smith Sound.

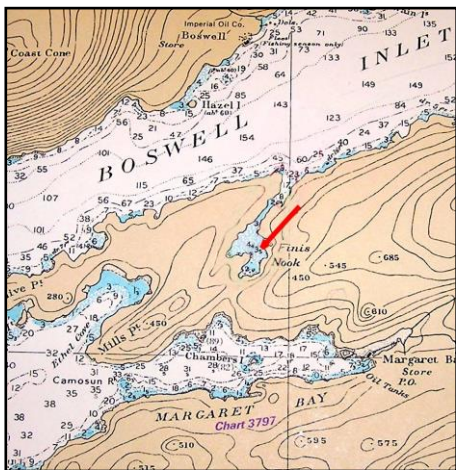


Wind.



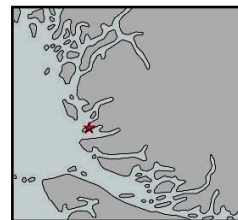
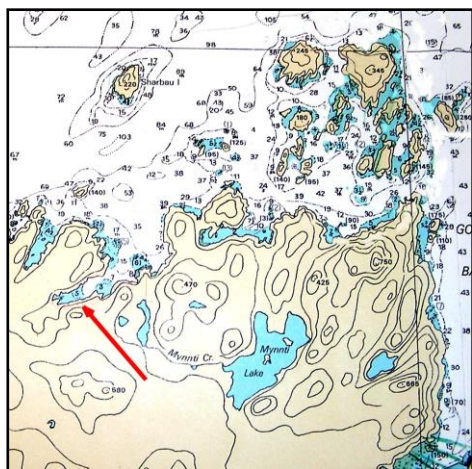
48. Milbrooke Cove. A. B. Chart 3550-76 3776-3934.
 51 19.6N 127 44.1W.

Across Smith Sound on the north side is Milbrooke Cove. The Approach is rocky so care is required. Anchor behind the island marked 100. There's fair to good holding and swing room. Recently Clear-cut on the West upland so is more open to the



49. Finis Nook. A. Chart 3550 3776 3931.
 51-20N. 127-30W.

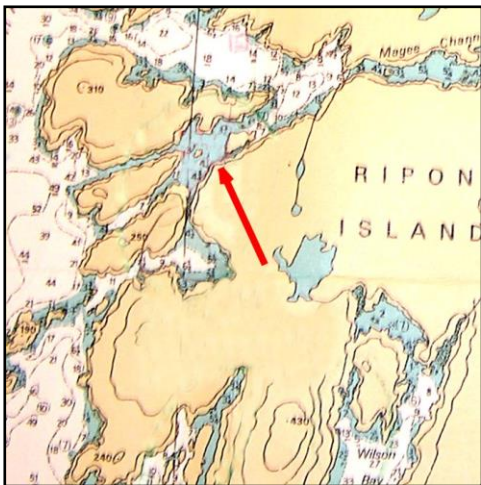
This is not found in many guide books. Located just Inside Boswell Inlet. The chart shows a narrow but safe entry Recent logging operations might spoil the views.



50. Home Bay. B.C. Chart. 3932-34 3779-97.
 51-23.7N. 127-42.8W.

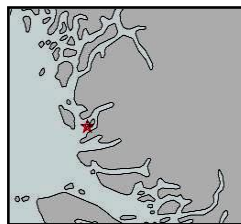
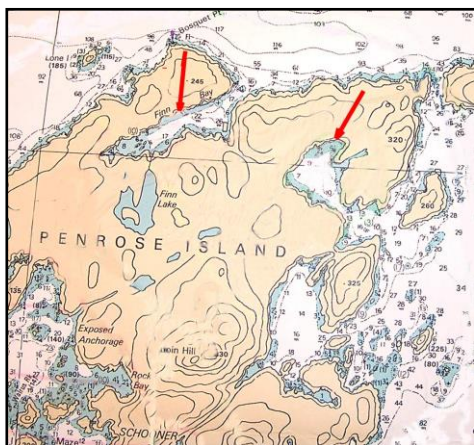
At the entrance to Rivers Inlet on the south side are the two "Home Bays". Both are good anchorages. The west bay is subject to strong Northerly or outflow winds. The East Bay

has a busy floating lodge that might be handy if help is needed.



51. Ripon Island. NW Corner. B.C. Chart 3779 3932.
51-29.1N. 127-39.9W.

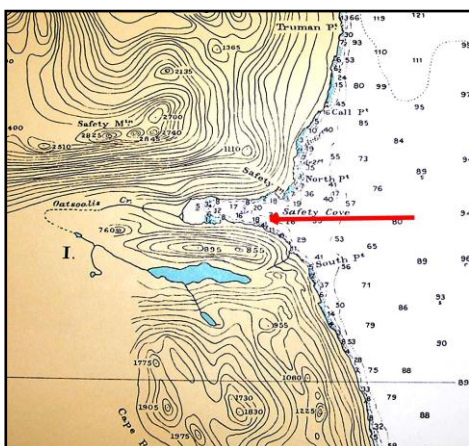
Also known as "Five Window Cove" This is classified as a harbour of refuge and traditional anchorage. If supplies or fuel are needed Dawsons Landing is north through Darby Channel.



52. Penrose Island Coves. A. Chart 3779-3932-34.
51-30.1N. 127-42.6W.

Two choices. The main anchorage is Frypan Bay in the nook at the northern corner. Finn Bay is approached from Darby Channel under the north shore.

Frypan Bay upland is Provincial Park.



53. Safety Cove. C. Chart 3727-3934.

51-32N. 127-55W.

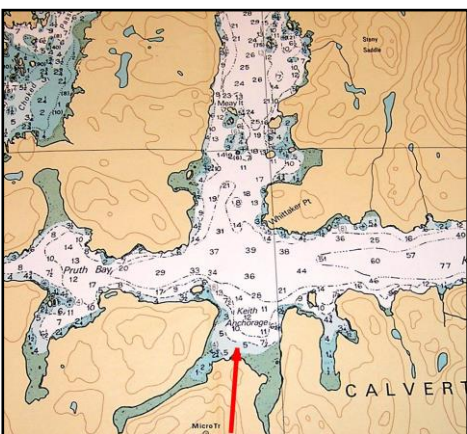
Heading North this is the first anchorage Calvert Island offers. Captain Cook used it in 1792. Depth is the major deterrent to small vessels. The head of the bay shallows up very quickly. Refuge only.



54. Green Island Anchorage. A. Chart 3921.

51-38.5N. 127-50.4W.

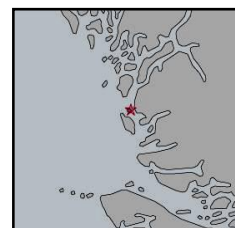
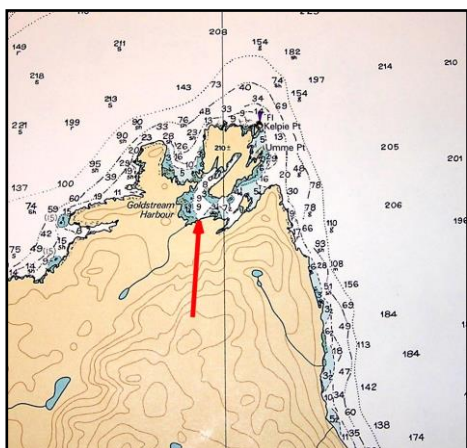
This is a well-sheltered location.



55. Keith Anchorage. A. Chart 3727-84.

51-39N. 128-05W.

A well-protected anchorage situated on the North Shore of Calvert Island. There is a private Lodge at the head of the Inlet that often serves transient visitors. There is a path through to the beach on the outside coast. Provincial Park.



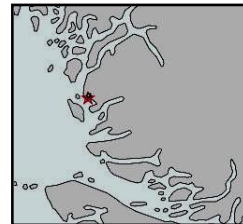
56. Goldstream Harbour. A. Chart 3727-84.

51-43.5N. 128-00.3 W.

A well sheltered anchorage situated at the NE point of Hecate Island. The depth is approximately eight to twelve fathom.

A stern line might be advisable.

Provincial Park.

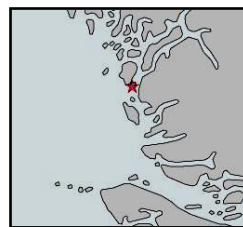
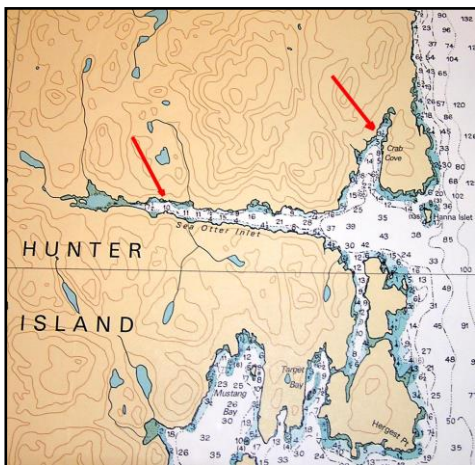


57. Kwakume Inlet. A. Chart 3727-84. 3935.

51 42N. 127 52W.

Enter carefully favouring the North shore. The depths vary and there are rocks, especially the one charted and drying in the middle.

The far eastern lagoon is even more sheltered but tends to be gloomy.

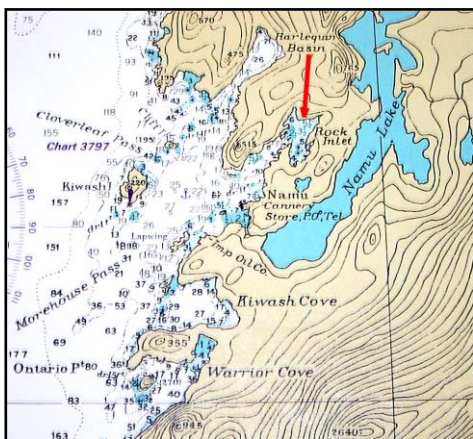


58. Sea Otter Inlet and Crab Cove. A. Chart 3727-84.

51 50N. 128 03W.

This inlet is nearly a mile long and good shelter is found at the West end but the water is deep enough to be a deterrent to small craft. Crab Cove is an alternate choice but open to South winds. The south arm is an alternative.

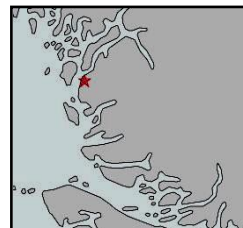
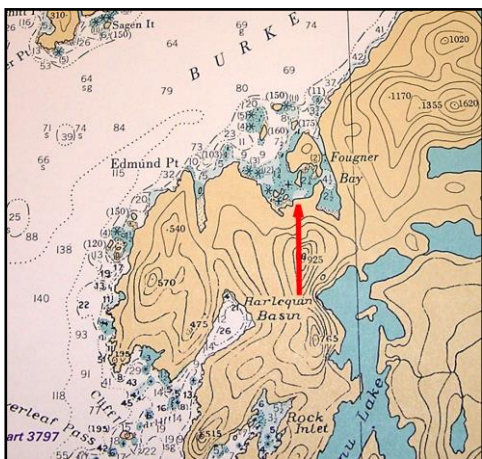
Provincial Park



59. Rock Inlet. A. Chart 3727-85.

51 52N. 127 51W.

A sheltered anchorage with a rocky approach plus some in the anchorage. Namu was a hive of industry and Rock Inlet the Favoured anchorage. Fuel and supplies are no longer available at Namu but this could change in the future.

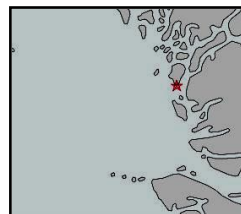
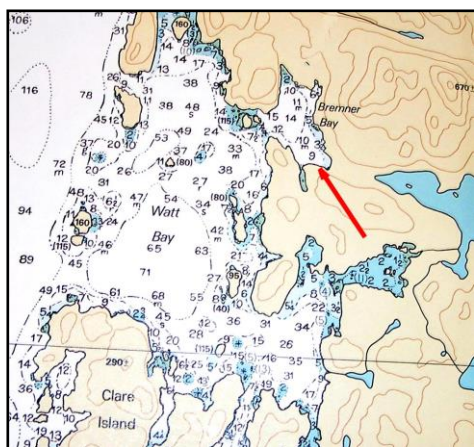


60. Foughner Bay. A. Chart 3727-85.

51-54.2N. 127-50.7W.

A well-sheltered anchorage when entering Burke Channel. Enter carefully. It is possible to carefully enter the inner cove. Watch the current.

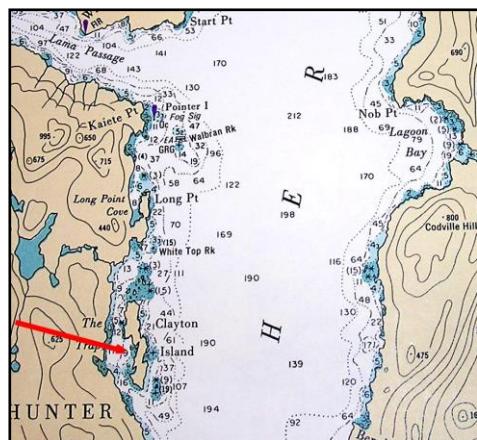
A weedy bottom so make sure your anchor is well set.



61. Bremner Bay. A. Chart 3727-29-84.

51-51N. 128-07W.

In Kildit Sound and a very sheltered location. Provincial Park.



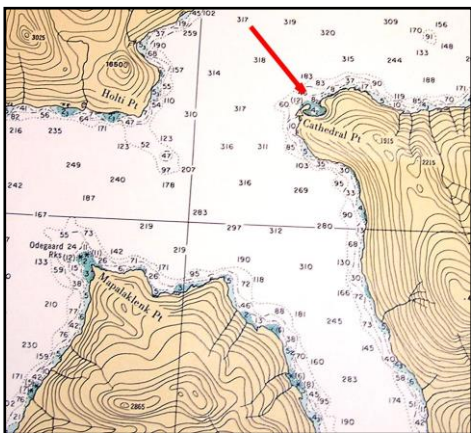
62. The Trap. C. Chart 3729-85.

52-02N. 127-57W.

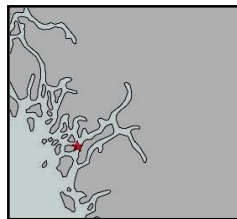
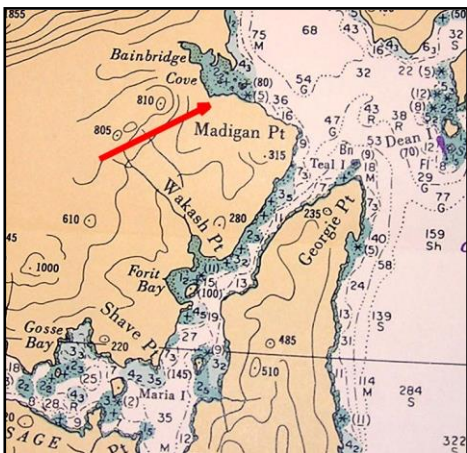
A Harbour of Refuge at the back of Clayton Island.

A preferred choice is across the channel to Codville Lagoon.

Boat Havens North of Latitude 52-10N



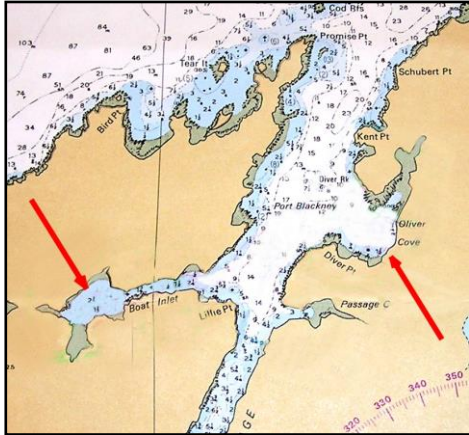
63. Cathedral Point. B.C. Chart 3729.
 52-11N. 127-28W.
 A handy nook half way along Burke Channel That might be Appreciated if needed.



64. Bainbridge Cove. C. Chart 3720-29.
 52-11N. 127-55W.
 This tiny cove has its share of rocky hazards but is handy to know about should the need arise.
 Refuge only.



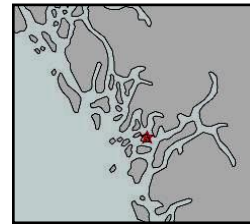
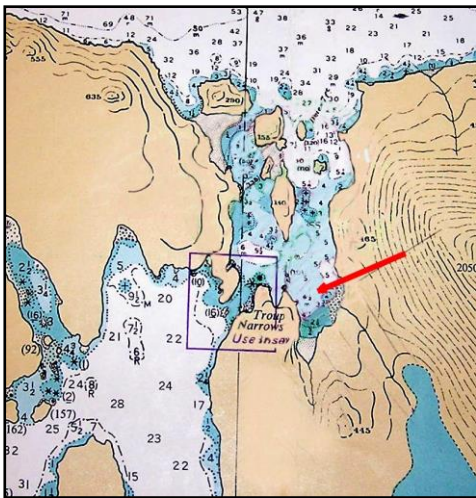
65. Kynumpt Harbour, Bay and Coves. B. Chart 3720-87.
 52-12N. 128-10W.
 At the Northern peak of Campbell Island. Strom Bay and Strom Cove are sheltered from most weathers, there's some wash from passing vessels.



66-7. Port Blackney and Oliver Coves. A-C. Chart 3710-28.
52-19N. 128-21W.

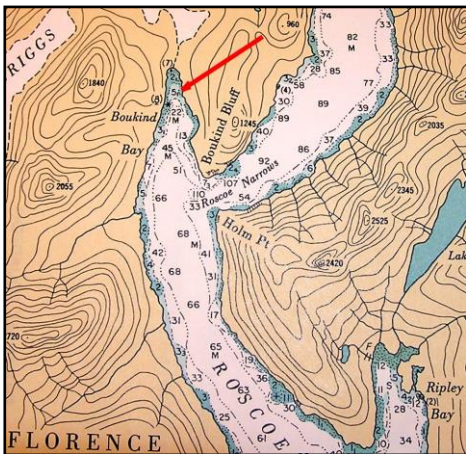
Behind Cecilia Island is narrow Reid Passage. Oliver Cove is subject to wakes of passing vessels. Boat Inlet is the preferred anchorage.

Oliver Cove is Provincial Park



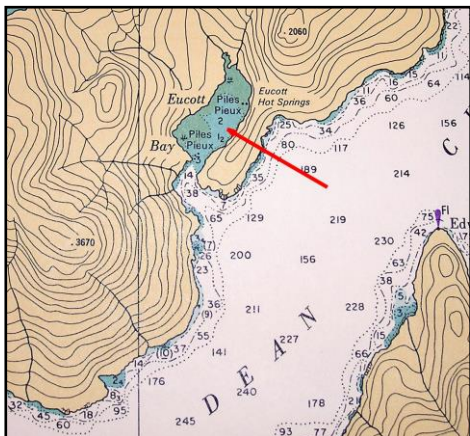
68. Troup Narrows. A. Chart 3720.
52-17.1N. 127-59.5W.

Also known as "Deer Passage" At the north end of Troup Passage. Favour the west side of the narrows when traveling through. The bay north of the narrows to the east is an excellent safe anchorage. See the inset on chart 3720.



69. Boukind bay. A.B. Chart 3729 3940.
52-27N. 127-56W.

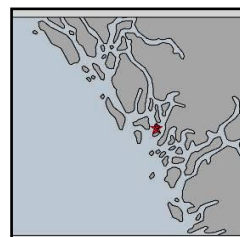
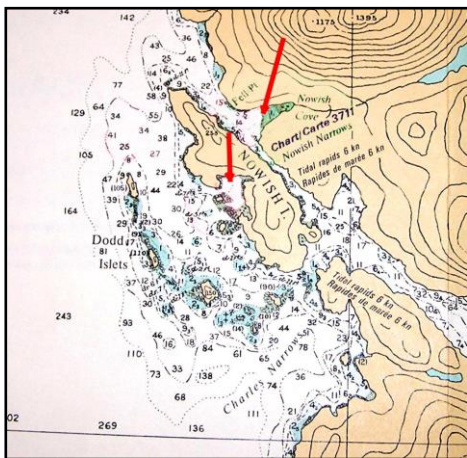
At Roscoe Narrows is Boukind Bay. A good anchorage but open to south winds. The holding is good at the head. There is a rough trail through to the inner end of Briggs Inlet. This is Bear country.



70. Eucott Bay. A. Chart 3729.

52-27N. 127-19W.

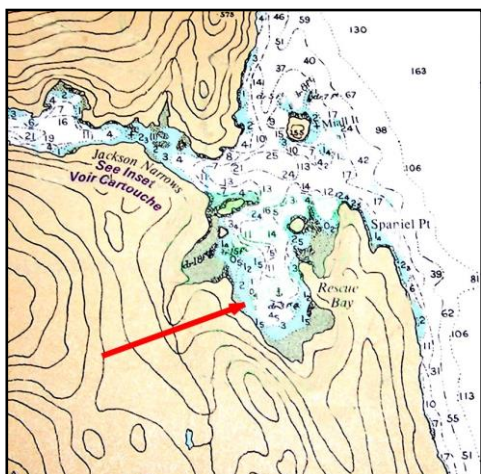
Probably one of the best anchorages in this area and has a Hot Springs. Easy entry through the narrows and anchor close to the eastern shore. Much of bay dries at low tide. Very Scenic. With luck the bears will graze close to your boat. Take a day trip up Cascade Inlet to see the water falls.



71.-71.a. Nowish Island Coves. B. C. Chart 3711-34.

52-31N. 128-25.7W.

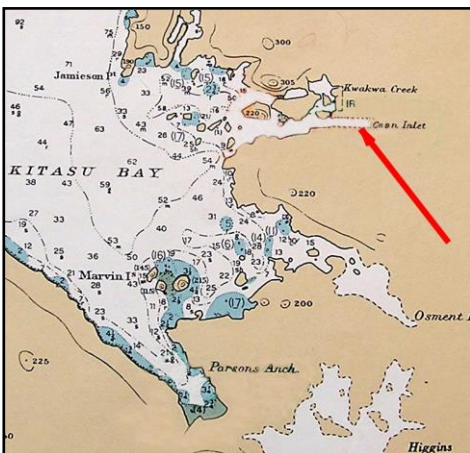
The small anchorage on the west of Nowish Island is subject to passing vessel wash. Entry to the inside anchorage is best made from the north. The south side of the bay is better for anchoring due to depth. The head of the bay dries at low tide. There is fresh water from the lake. Klemtu has fuel and Limited supplies. Fair weather or refuge.



72. Rescue Bay. A. Chart 3711-34.

52-31N. 128-17W.

One of the best anchorages in Mathieson Channel. The inset on chart 3734 lightens the worry of going through Jackson Narrows. Both sides of upland of East Jackson Narrows is Provincial Park.



73. Cann Inlet. B.C. Chart 3737.
 52-33.1N. 128-41.7 W.
 This inlet is uncharted (Sept/05) Local knowledge advises careful entry is possible and the anchorage is safe and scenic and proposed as a marine park. Fresh water and land access is available.



74. Bottleneck Inlet. A. Chart 3734.
 52-42N. 128-24W.
 The entrance has current flow and is less than 2 fathom at zero tide. A sheltered anchorage with good holding. The head dries at low tide. The chart indicates a stream from a lake.



75. James Bay. C. Chart 3962.
 52-42N. 128-12W.
 East of Pooley Island in Mathieson Channel. Inclined to be open to south winds. The holding is good but deep for small vessels. There is possible anchorage as shown at the sides so check for holding. At the head the bottom comes up very quickly. Refuge only.



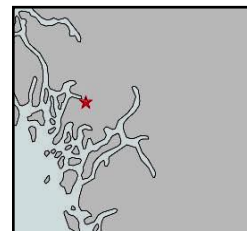
76. Culpeper Lagoon. B.C. Chart 3962.

52-44.4N 127-52W.

There are varying opinions of this anchorage. Sailing Directions have none.

The shelf indicated shows on the chart quite well. A stern tie to shore might be advisable.

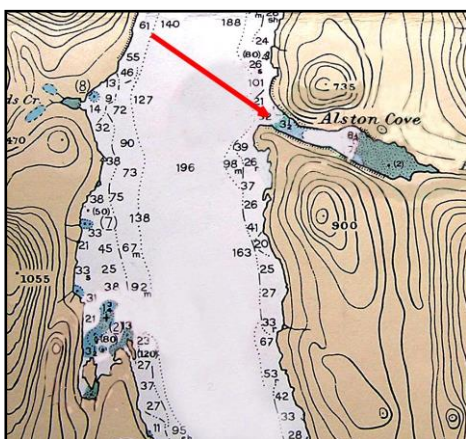
Provincial Park.



77. Kynoch Inlet. C. Chart 3962.

52-44.8N. 127-54W.

This is Fiordland Park scenery at its best, but limited anchorage due to the extreme depths. See Chart 3962 (Inset B) shows the shelf indicated where there is the possibility of anchoring. Subject to SW wind. Provincial Park

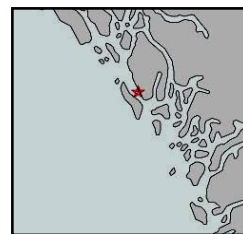


78. Alston Cove. A. Chart 3737.

52-45N. 128-45W.

After entering Laredo Inlet, Alston Cove is about five miles further north. A scenic place and well sheltered. The head dries at low tide so watch the sounder. The water is fairly deep but the holding is good.

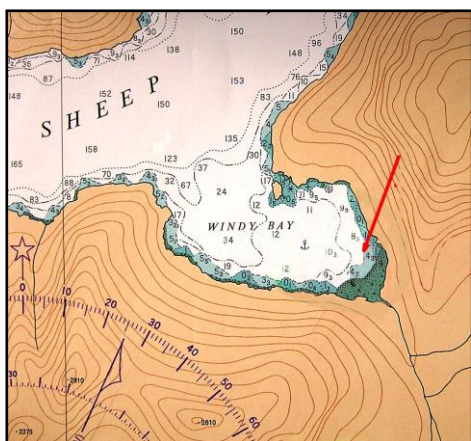




79. Smithers Island Anchorages. B.C. Chart 3719-37.

52 46N. 129 04W.

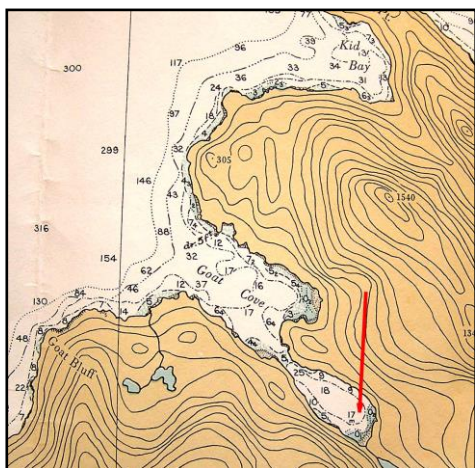
Smithers Island with its two small coves. On the south and East. Both are reasonably protected from the winds but the bottom is rocky so holding is questionable. The inset of Chart 3719 has the better view.



80. Windy Bay. B.C. Chart 3962.

52-46.8N. 128-12.5W.

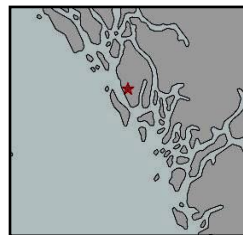
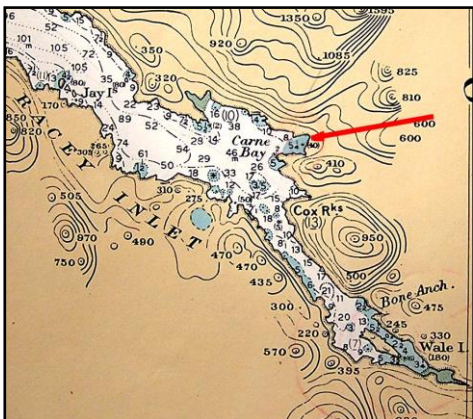
This is an open bay. As the name implies the wind does tend to enter the bay. The SE corner is best for southerly and the NE corner for a northerly. It's deep. A stern tie might be advisable. See Goat Cove.



81. Goat Cove. A. Chart. 3738.

52-46.5N 128-23.5W.

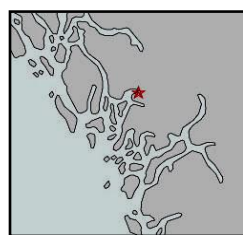
Near to the junction of three major channels. A sheltered anchorage, a little deep perhaps but there is fair to good holding at the head of the inner cove and a fresh water stream.



82. Carne Bay. C. Chart 3737.

52-52N. 129-02W.

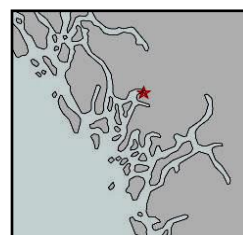
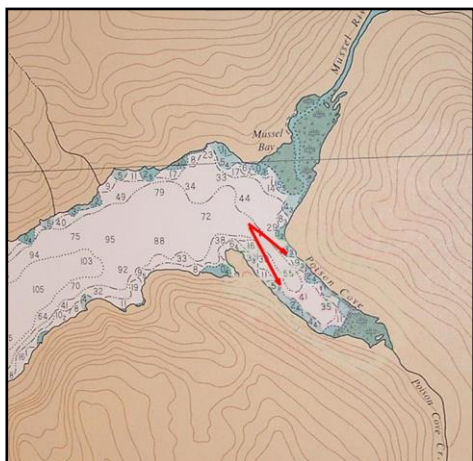
Avoid Hallet Rock at the entrance of rocky Racey Inlet. Carne Bay is three miles in on the north side. Refuge only.



83. David Bay. C. Chart 3962

52-53N. 128-08W.

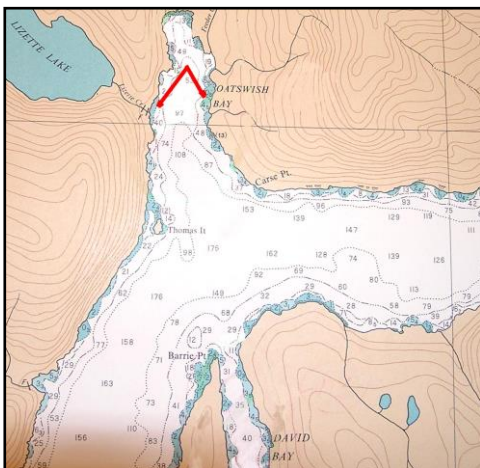
A fair weather only anchorage due to depth and open to the north. There is a shelf along the SE shore as indicated but is subject to rocks. A stern tie is advisable. All upland is Park. Scenic for a visit but not to stay.



84. Poison Cove. C. Chart 3962.

52-54N. 128-02W.

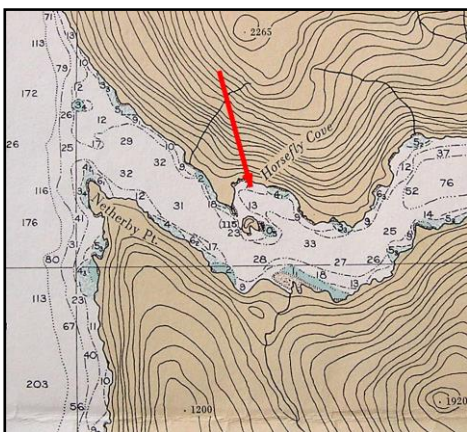
Very deep for small vessels and the shores are steep. The description of this cove is virtually that of David Bay. All upland is Park.



85. Oatwish Bay. C. Chart 3962.

52-55N. 128-08W.

Like many fiords it's deep and steep sided but It's very scenic. You might find some sort of anchorage along the shore indicated but only in the fairest of weather. All upland is Park.

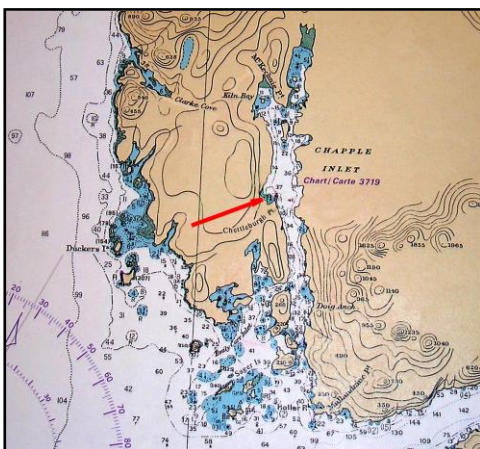


86. Horsefly Cove. B.C. Chart 3738.

52-55N. 128-28.9W.

In Green Inlet, is Horsefly Cove.

A fair weather only anchorage providing your anchor holds. Immediate upland and island is Provincial Park.

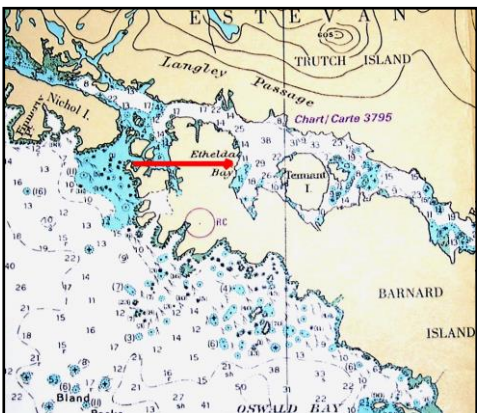


87. Chapple Inlet. A. Chart 3737.

52-56.7N. 129-08.5W.

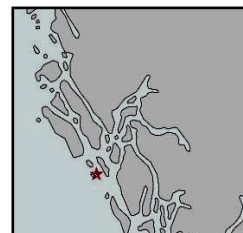
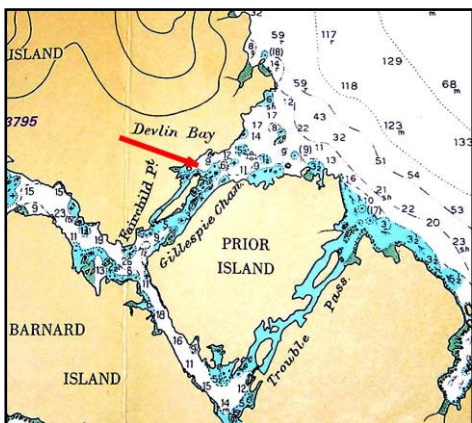
Give Chettleburg headland a wide berth before turning into The bay. If the wind is strong from the north continue up to the head of Chapple Inlet.

It's narrow and rocky. Holding uncertain.



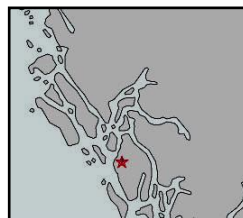
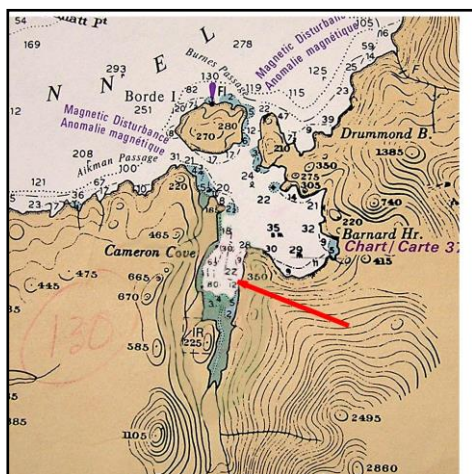
88. Ethelda Bay. B. Chart 3742-95.
53-03N. 129-40W.

Langley Passage is scenic but narrow and rocky. The west entry is subject to heavy swells, even in settled weather. The anchorage is ten to fourteen fathom with good holding.



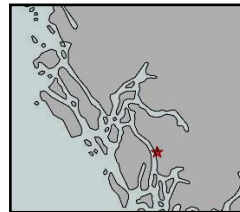
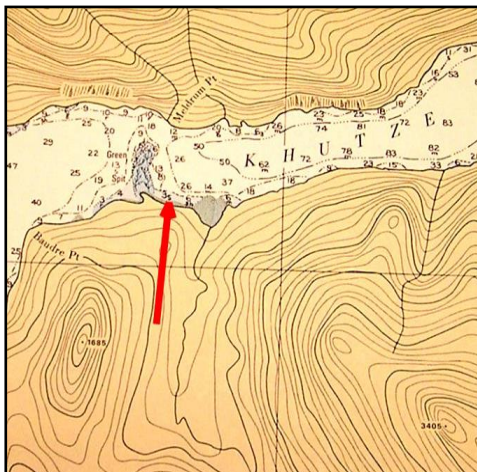
89. Devlin Bay. B-C. Chart 3724-42-95.
53-04N. 129-35W.

A settled weather anchorage, fairly deep, with reasonable holding.



90. Cameron Cove. Barnard Harbour. B-C. Chart 3737.
53-04N. 129-07W.

Scenic but open to north Winds. Southerly winds find their way through the valley into the bay. This makes the anchorage suitable for settled weather only.



91. Green Spit. Knutze Inlet. C. Chart 3739.

53-05N. 128-31W.

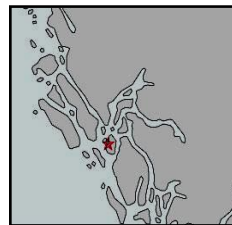
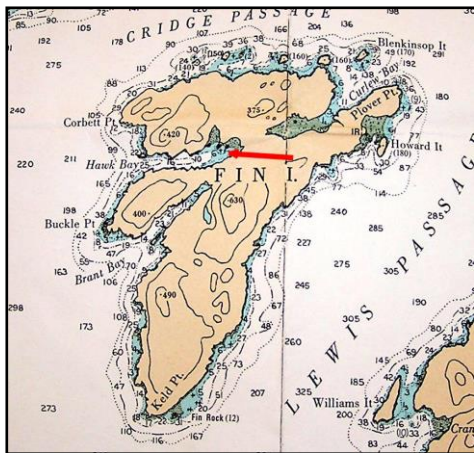
Traveling north or south through Princess Royal Channel at Graham Reach, this is a handy place to know. An emergency only anchorage immediately east of Green Spit.



92. Weinberg Inlet. A. Charts 3719-42.

53 08N. 129 32.1W.

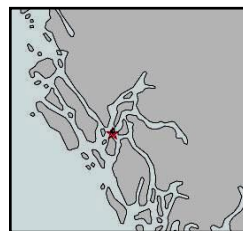
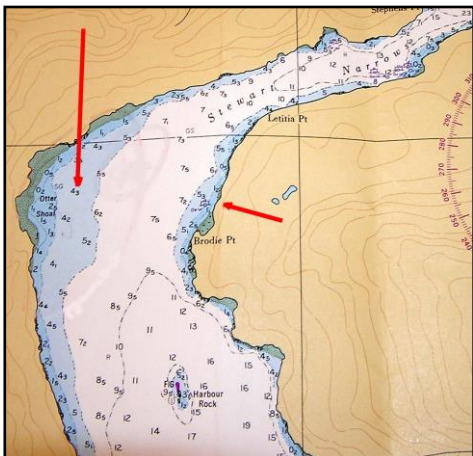
Several anchorages. Those indicated are arrived at using Anderson Channel. Most others are safe anchorages. Take your pick.



93. Hawk Bay. Fin Island. B.C. Chart 3742.

53-16N. 129 22W.

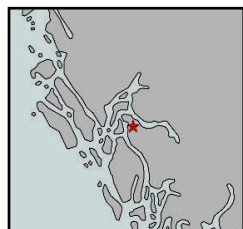
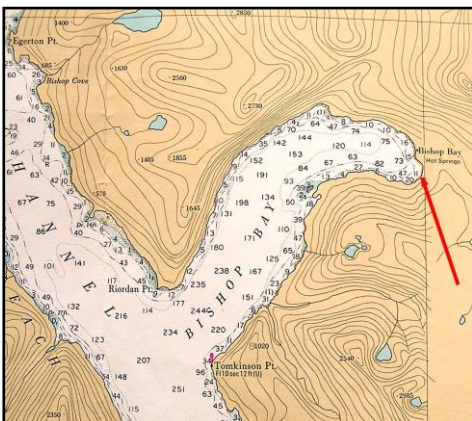
Strong westerlies can rough up this little cove. There is limited anchorage behind the first islet with trees. The heads of both north and east small bays go dry.



94. Coghlan Anchorages. A.B. Chart 3711-42.

53-23N. 129 16W.

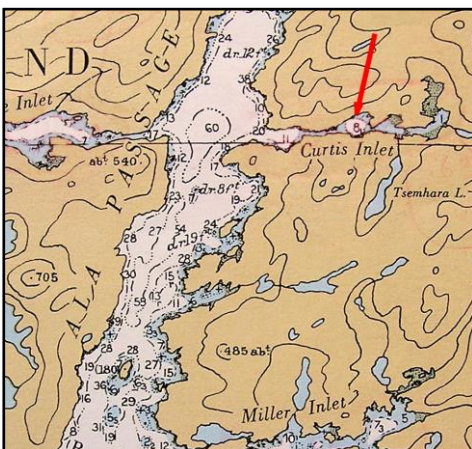
Enter from Douglas Channel or Wright Sound. Use the Shallow areas for anchoring. If south winds are worrisome There are public mooring buoys in Stewart Narrows. Tidal flow can be quite strong.



95. Bishop Bay Hot Springs. B. Chart 3742-43.

53-28N. 128-50W.

A popular place, the Hot Springs being the attraction. Located off Ursula Channel Bishop Bay can be windy with a westerly. You need plenty of scope.



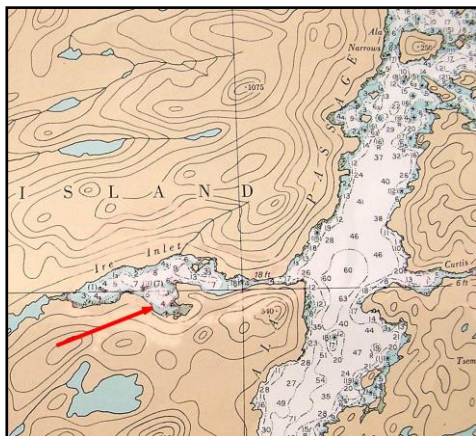
96. Curtis Inlet. A. Charts 3741-46.

53-30.N. 129-53.

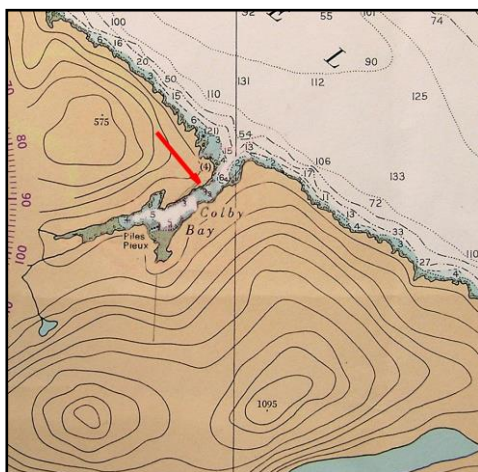
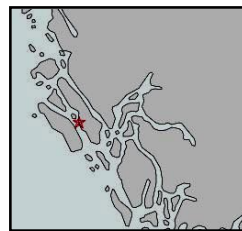
Off Ala Passage is Curtis Inlet. There are reports of an uncharted rock in the middle.

A safe anchorage.

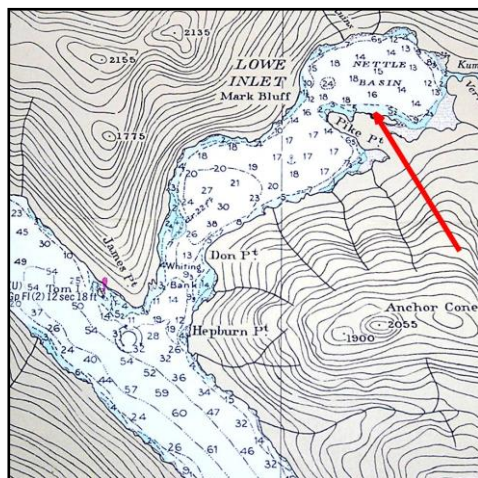
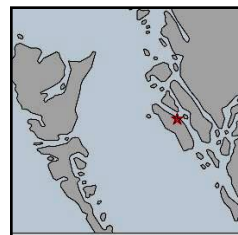
See Ire Inet.



- 97. Ire Inlet. A.** Charts 3741-46.
53-30N. 129-56W.
A companion to Curtis Inlet and an equally safe anchorage
In the small cove indicated.

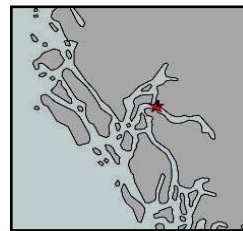
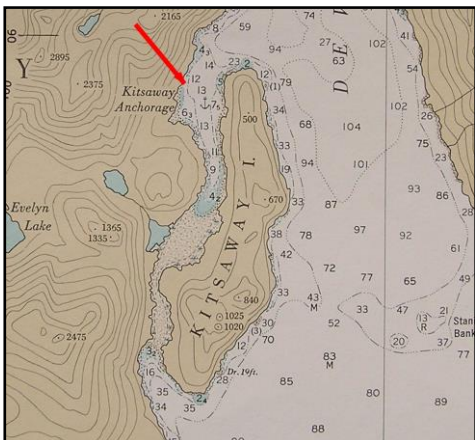


- 98. Colby bay. A.** Chart 3746-53.
53-32N. 130-10W.
On the east side of Banks Island.
A sheltered anchorage. Watch for rocks on either side of
the entry.



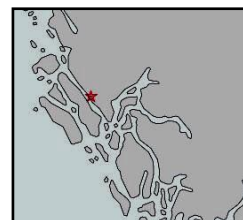
- 99. Lowe Inlet. A.** Chart 3772.
53-33N. 129-35W.
Off Grenville Channel This is a favourite anchorage for
those heading north or south. Verney Falls is best seen at
low tide. On the north side of the falls is the beginning of a
rough trail up the Kumowdah River.
This is Bear country. Most upland is Provincial Park.





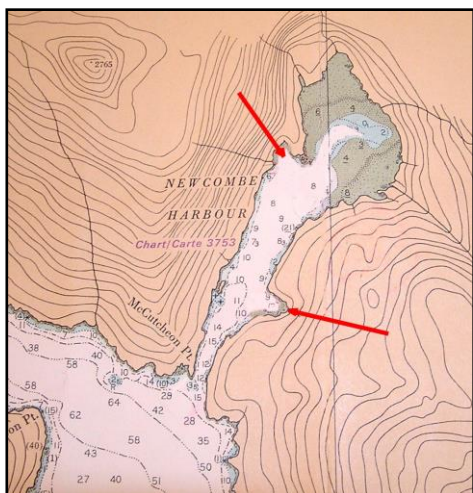
100. Kitsaway Anchorage. A. Chart 3743.
53-37N. 128-53W.

A sheltered anchorage on the east side of Hawksbury Island. Though not noted the local Haisla First Nation has interests in this area.



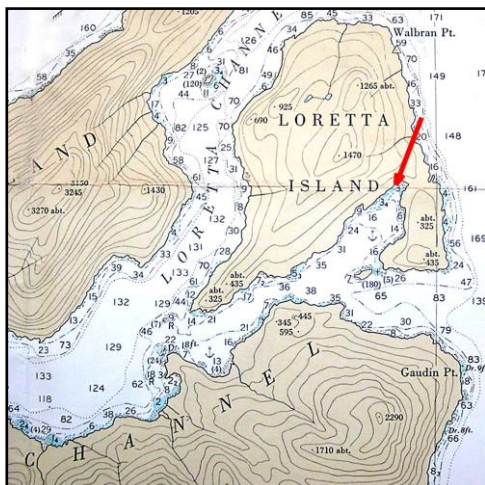
101. Klewnuggit Inlet. B.C. Chart 3772.
53-41N. 129-44W.

It is possible to anchor in the area indicated but it's very deep and holding is uncertain. After this site was chosen the East Inlet inner basin and upland was declared a Provincial Park and anchoring there is preferable in the nook on the left just inside the second narrows. Williwaws can come at times. Make sure your anchor is holding and be prepared to let out lots of scope.



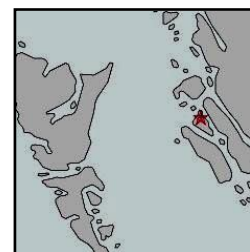
102. Newcombe Harbour. A. Chart 3746-53.
53-42N 130-05W.

A sheltered anchorage. Choose the east side when entering. The two nooks are favoured. Much of the head dries at low tide. Watch your sounder.



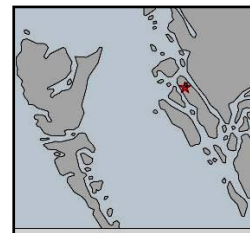
103. Loretta Island Cove. B. C. Chart 3743.
53-44N. 128-52W.

A sheltered but deep anchorage but no indication of Bottom conditions. A stern tie might be advisable. The immediate upland is Provincial Park.



104. Spicer Island Anchorage. A. Chart 3747.
53-45N. 130-21.5W.

Enter from Beaver Passage. There's several choices. A well protected anchorage, somewhere to go exploring from.



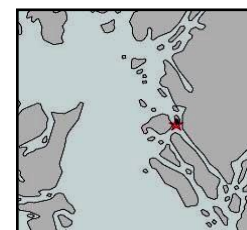
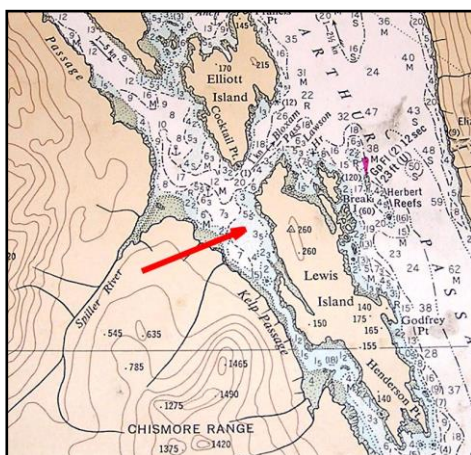
105. Captain Cove. A. Chart 3927-53.
53-49N. 130-12W.

Well protected on the west side of Pitt Island. A logging operation was on the north shore and might still be working. If so it might be a little noisy.



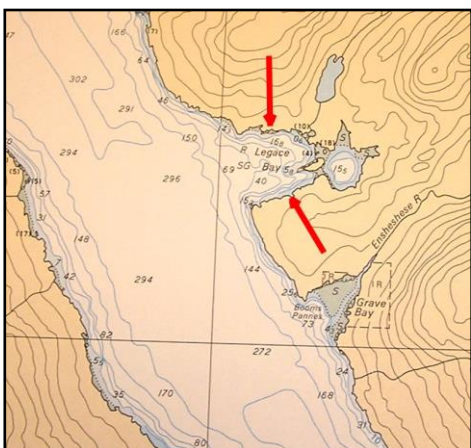
106. Kumealon Island Anchorages. A. Chart 3773.
53-51N. 130-01W.

At the entrance to Kumealon Inlet there are two anchorages, the northern is preferable. The head dries so watch your sounder. There is anchorage at the head of Kumealon Inlet behind the Islands.



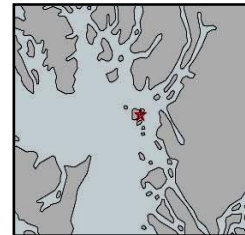
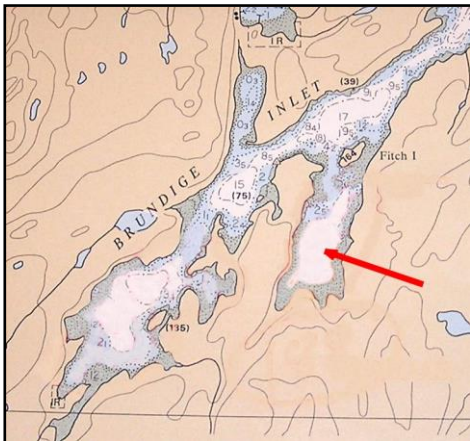
107. Kelp Passage Anchorage. A. B. Chart 3927.
54-01N. 130-16W.

West side of Lewis Island. there is a rock about 50 yards From the shore. If there's concern of a strong southwester Lawson Harbour around the top of Lewis Island might be preferable.



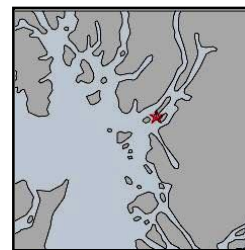
108. Legace Bay. C. Chart 3963-93.
54-31N 130-14W.

An anchorage for refuge depending on wind direction. The shelf areas indicated have the least depth. Holding is uncertain.



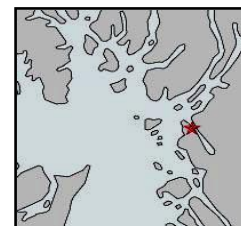
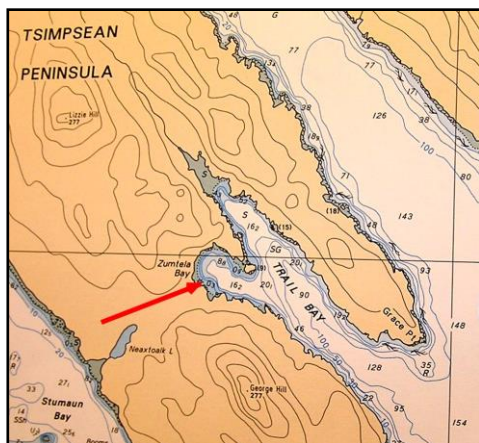
109. Brundige Inlet. A. Map 103J 056. Chart 3909-92.
54-36N. 130-52W.

Two anchorages. One in the basin at the southeast corner of the inlet. The other further into the head of the main Inlet
Excellent anchorages with protection from all weather.



110. Winter Inlet. A. Chart 3960-92-94.
54-48.6N. 130-26.4W.

A safe anchorage off Pearce Canal. The depths are Reasonable for small vessels. The head dries.
Northwest winds might blow through, the holding is good.



111. Zumtela Bay. B.C. Chart 3960-63
54-35N. 130-22W.

Located approx. six miles down Work Channel.
Graded as B. or C. Because of being little open to the Southeast.
The head of Trail Bay is not as sheltered as Zumtela Bay.

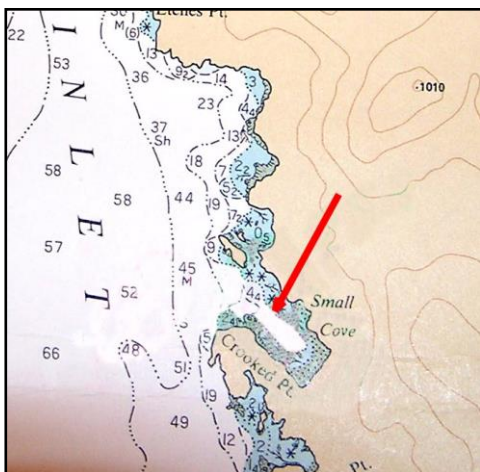
The remaining anchorages are located around the Queen Charlotte Islands. Those on the West Coast will be identified as such. This is not a cruising area to be approached lightly. The summer winds and weather can change abruptly and there are few places to hide. Services are infrequent. You will need to be self contained and prepared. Going ashore might require prearrangement with the Haida Nation



112. Keeweenah Bay. B.C. Chart 3825.

52-06N. 130-57W.

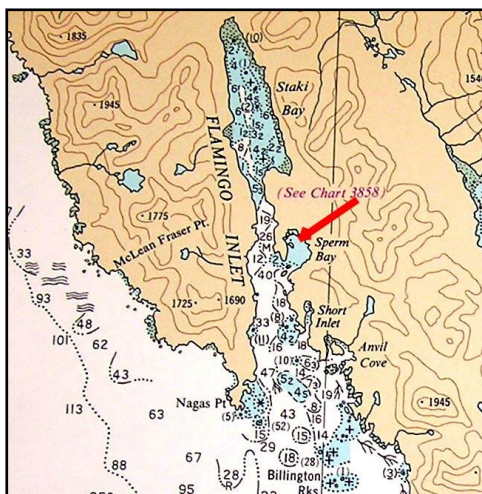
Located at the Northeast of Kunghit Island. Anchor close in the West corner to avoid northern weather.. Gwai Hanaas National Park Reserve. Haida Heritage Site. Prearrange going ashore.



113. Small Cove B.C. West Coast. Chart 3825-3743

52-08N. 131-13W.

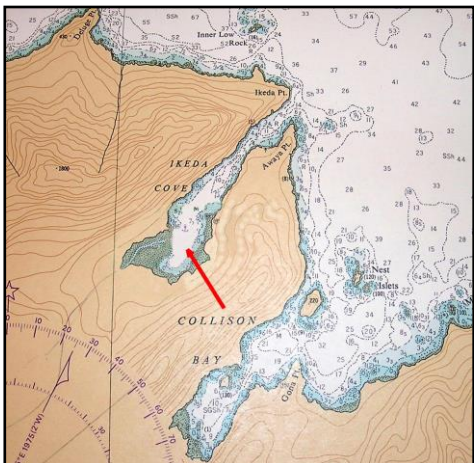
Just inside Louscoone Inlet. A safe anchorage in all but strong northerlies. Gwai Hanaas National Park Reserve. Haida Heritage Site. Prearrange going ashore



114. Sperm Bay. A.B. West Coast. Chart 3858.

52-13N. 131-21W.

In Flamingo Inlet. If the wind is from the south tuck in close to the North side of the island. Gwai Hanaas National Park Reserve. Haida Heritage Site. Prearrange going ashore.



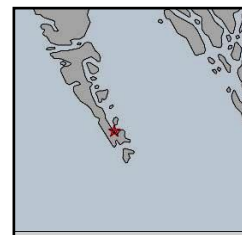
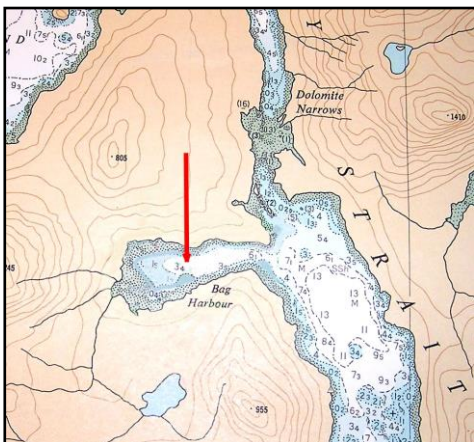
115. Ikeda Cove, A. Moresby Island. Chart 3809.

52 16N. 131 9.5W.

Remnants of railway track and an old mine can be found. There is a large Midden by the creek at the head.

Ikeda Point can be hazardous when strong wind and tide oppose. Anchorage at the head might be impeded by logging activity.

Gwai Hanaas National Park Reserve. Haida Heritage Site. Prerarrange going ashore.

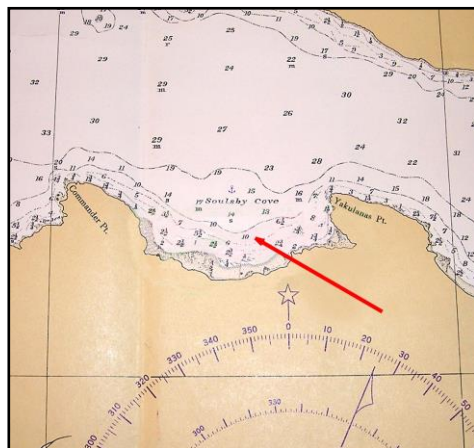


116. Bag Harbour. A.B. Chart 3809

52-21N. 131-22W.

At the head is a stream and the site of a seasonal Haida village known as Lanahawa. Anchorage is good for most weathers.

Gwai Hanaas National Park Reserve. Haida Heritage Site. Prerarrange going ashore.



117. Soulsby Cove. B. C. Gowgaia Bay. West Coast. Chart 3864.

52-24N. 131-33W.

A fair weather or emergency anchorage only. See Goski Bay Cove. See Neil Frazers book "Boat Camping Haida Gwaii" (Harbour Publishing)

Gwai Hanaas National Park Reserve. Haida Heritage Site. Prerarrange going ashore.



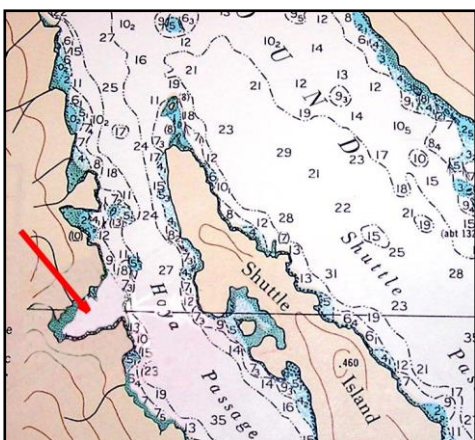
118. Goski Bay & Village. B.C. Chart 3864.

52-26N. 131-33W.

North side of Gowaia Bay opposite Soulsby Cove. On the Western shore is a small notch to anchor.

A fair weather shelter only. See "Boat Camping Haida Gwaii" by Neil Frazer.

Gwai Hanaas National Park Reserve. Haida Heritage Site. Prerarrange going ashore.



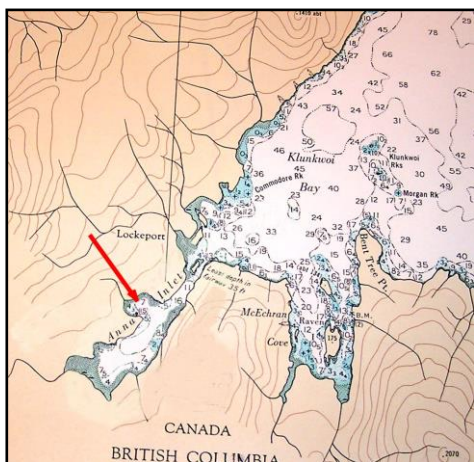
119. Hoya Passage, A.B. Darwin Sound. Chart 3807-08-53.

52-39N. 131-42W.

At the northern end of Hoya Passage. There's room to Anchor and maybe a buoy holding a water hose. Across at Shuttle Island is a small bay with an Islet, anchorage is possible there.

Gwai Hanaas National Park Reserve. Haida Heritage Site.

Prerarrange going ashore.



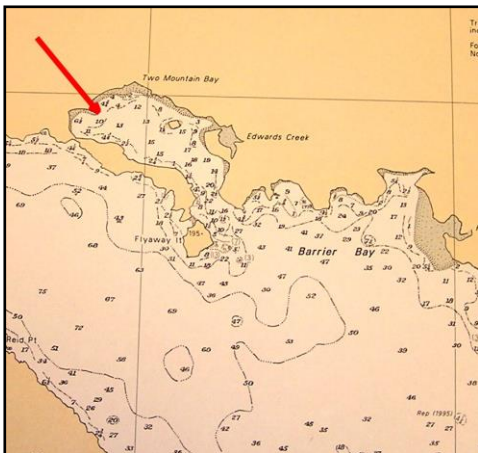
120. Anna Inlet, A. Darwin Sound. Chart 3807.

52-42N. 131-50W.

The entrance is narrow. Half way down is a small bay to starboard, approx. 4.5 Hect. At the head of the inlet is a stream.

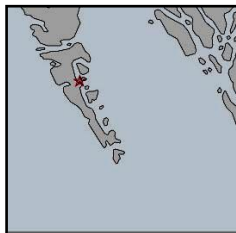
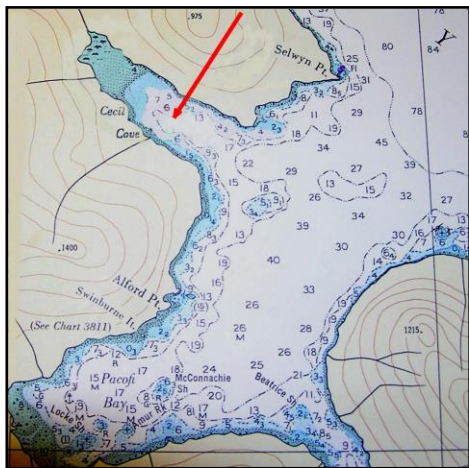
Gwai Hanaas National Park Reserve. Haida Heritage Site.

Prearrange going ashore.



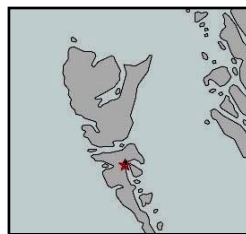
121. Two Mountain Bay, A.B. West Coast. Chart 3859.
52-48N. 132-00W.

This anchorage has good protection from waves but not so much from wind. The holding is good. Anchor close to the Western shore.



122. Cecil Cove, A.B. Selwin Inlet. Chart 3807
52-51N 131-52W.

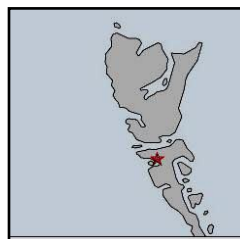
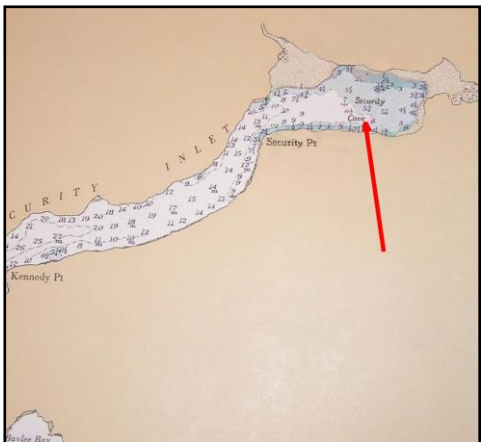
Most weather anchorage in the center of the cove. There is a stream on the south side. A dinghy trip down to Pacofi Bay to visit an old cannery site might be interesting.



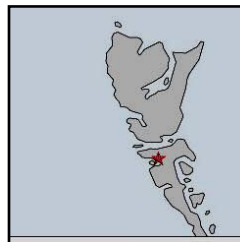
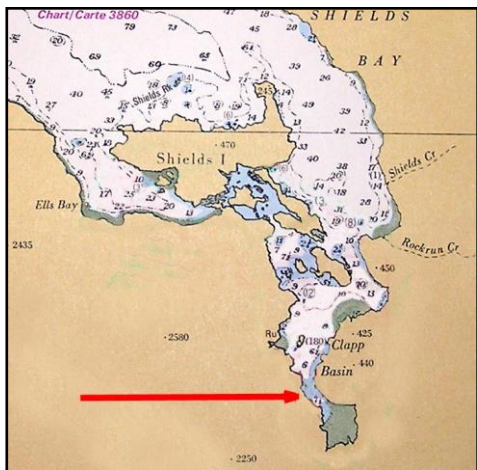
123. Gordon Cove, A. Gillatt Arm. Chart 3894.
53-02N 132-02W.

At the head of Gillatt Arm in the far SW corner is Gordon

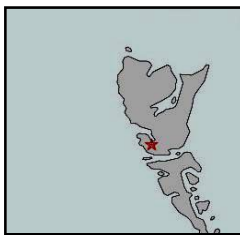
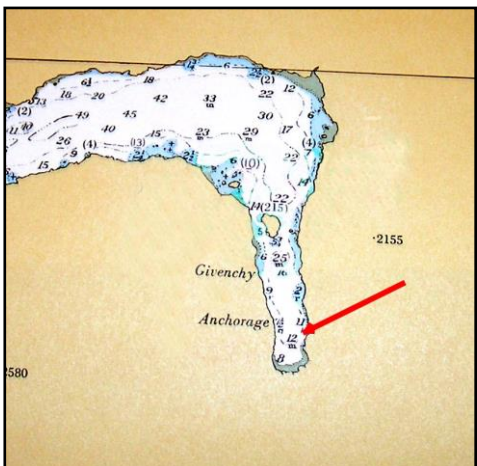
Cove. A well protected anchorage.



124 Security Inlet. A.B. West Coast. Kuper Inlet. Chart 3865. 53-04N 132-17W. Off Englefield Bay. Mackenzie Cove is open to the Pacific swells. Best anchorage is at the head of the inlet.



125. Clapp Basin. A. B. West Coast. Shields Bay. Chart 3860-69. 53-18N. 132-26W. A secure anchorage at the south end of the Basin. Take Care While entering. Watch for drying shallows before turning into Clapp Basin. Fresh water available from creeks.



126. Givenchy Anchorage, A.B. West Coast. Chart 3869. 53-18N. 132-33W.

At the end of Kano Inlet the anchorage opens up the best anchorage is the head of the inlet.

Index

Code	Provincial Boat havens	Page	Chart	Lat.	Long.
C	Ahnuhati Point	16	3515/78	50-53.4N	125-38.1W
A	Alston Cove	28	3737	52-45N	128-45W
C	Anderson Bay	8	3512	49-31N	124-08W
B	Anna Inlet, Darwin Sound	42	3807	52-42N	131-50W
C	Bainbridge Cove	24	3729/20	52-11N	127-55W
B	Battle Bay	5	3683	50-07N	127-35.6W
A	Bag Harbour Burnaby Strait	41	3809	52-21N	131-22W
C	Bishop Bay Hot Spring	34	3742	53-28N	128-50W
A	Blunden Harbour	16	3548	50-54N	127-17W
B	Boat Bay	11	3545/6	50-31N	126-34W
A	Bootleg Cove	13	3515	50-42.8N	126-34.2W
A	Bottleneck Inlet	27	3734	52-42N	128-24W
C	Boukind Bay	25	3729	52-27N	127-56W
A	Bremner Bay	23	3727	51-51N	128-07W
A	Brundige Inlet	39	3909	54-36N	130-52W
C	Burial Cove	11	3564	50-33N	126-13W
C	Carne Bay, Racey Inlet	30	3737	52-52N	129-02W
C	Cameron Cove, Barnard Harbour	32	3737	53-04N	129-07W
C	Cann Inlet	27	3737	52-33.1N	128-41.7W
A	Captain Cove	37	3927	53-49N	130-12W
B	Cathedral Point	24	3729	52-11N	127-28W
A	Cecil Cove Selwyn Inlet	43	3807	52-51N	131-52W
A	Chapple Inlet, Campania Sound	31	3737/19	52-56.7N	129-08.5W
C	Clam Bay	7	3442	48-49.5N	123-39W
A	Clapp Basin, Shields Bay	44	3869	53-18N	132-26W
A	Claydon Bay	16	3547	50-56.3N	126-53.4W
A	Colby Bay, Banks Island	35	3746	53-32N	130-10W
A	Coghlan Anchorage	34	3742	53-23N	129-16W
A	Columbia Cove	5	3683	50-08N	127-41W
A	Crease Island Anchorage	12	3545/6	50-36.9N	126-38.6W
C	Culpeper Lagoon	28	3962	52-44.4N	127-52W
A	Curtis Inlet, Pitt Island	34	3741	53-30N	129-53W
A	Cutter Cove	12	3545/64	50-37N	126-15W
C	David Bay	30	3962	52-53N	128-08W
C	Devlin Bay	32	3742	53-04N	129-35W
A	Dickson Island N.E. Cove	15	3547	50-50.3N	126-55.5W
A	Dixie Cove	5	3682	50-03N	127-12W
B	Douglas Bay	10	3515	50-29N	125-45W
A	Eden Island N.E. Cove	14	3515	50-45.4N	126-39.3W
B	Ethelda Bay	32	3742	53-03N	129-40W
A	Eucott Bay	26	3729	52-27N	127-19W
A	Finis Hook	19	3550	51-20N	127-30W
A	Foughner Bay	23	3727/85	51-54.2N	127-50.7W
A	Givenchy Anchorage,	44	3869	53-18N	132-33W
A	Goat Cove	29	3738	52-46.5N	128-23.5W
A	Goldstream Harbour	21	3727	51-43.5N	128-00.3W
A	Gordon Cove, Gillatt Arm	43	3894	53-02N	132-02W
C	Goski Bay Cove, Cowgaia Bay	42	3864	52-26N	131-33W
B	Green Bay	8	3512	49-43N	124-05W
A	Green Island Anchorage	21	3921	51-38.5N	127-50.4W
C	Greenspit, Khutze Inlet	33	3739	53-05N	128-31W
B	Growler Cove	11	3545/6	50-32.4N	126-37W
B	Hawkbay, Fin Island	33	3742	53-16N	129-22W
C	Helmcken Island Anchorage	10	3544	50-24N	125-52W
C	Home Bay	19	3932	51-23.7N	127-42.8W
C	Horsefly Cove	31	3738	52-55.3N	129-28.9W
B	Hoya Passage, Darwin Sound	42	3807	52-39N	131-42W
B	Ikeda Cove, Moresby Island	41	3809	52-18N	131-9.5W

A	Ire Inlet, Anger Island	35	3741	53-30N	129-56W
C	James Bay	27	3962	52-42N	128-12W
B	Jones Cove	18	3550	51-15N	127-45W
C	KeeWeeNa Bay, Kunghit Island	40	3825	52-06N	130-57W
A	Keith Anchorage	21	3727	51-39N	128-05W
A	Kelp Passage Anchorage	38	3927	54-01N	130-16W
A	Kitsaway Anchorage	36	3743	53-37N	128-53W
C	Kynoch Inlet	28	3962	52-44.8N	127-54W
A	Klewnuggit Inlet	36	3772	53-41N	129-44W
A	Kumealon Island Anchorage	38	3773	53-51N	130-01W
A	Kwakume Inlet	22	3935	51-42N	127-52W
B	Kynumpt Bay & Coves	24	3787	52-12N	128-10W
B	Laura Bay	14	3515	50-49.4N	126-34.1W
C	Legace Bay	38	3963	54-31N	130-14W
C	Loretta Island cove	37	3743	53-44N	128-52W
A	Lowe Inlet	35	3772	53-33N	129-35W
A	Mary Basin	4	3676	49-47N	126-50W
C	McLeod Bay	10	3544	50-28N	125-59W
A	Milbrook Cove	19	3550	51-19.6N	127-44.1W
A	Miles Inlet Braham Island	17	3549/50	51-04N	127-34.7W
B	Musgrave Landing	6	3441	48-45N	123-33W
C	Napier Bay	15	3547	50-51N	126-51.2W
A	Newcombe Harbour, Pitt Island	36	3746	53-42N	130-05W
C	No Name Cove, W.of Humpback	9	3544	50-21.5N	125-41.9W
C	Nowish Cove	26	3734	52-31.3N	128-25.7W
B	Nowish Island S.W. Side	26	3734	52-31.3N	128-25.7W
C	Oatwish Bay	31	3962	52-55N	128-08W
C	Otter Cove	9	3539	50-19N	125-27W
A	Pamphlet Cove	6	3679	50-31N	127-39W
A	Peet Bay	18	3552	51-09.8N	127-04.2W
A	Penrose Island Coves	20	3932	51-30.1N	127-42.6W
C	Poison Cove	30	3962	52-54N	128-02W
A	Port Blackney, Boat Inlet	25	3710/28	52-19N	128-22W
C	Port Blackney, Oliver Cove	25	3710/28	52-19N	128-21W
A	Potts Lagoon	12	3545/6	50-33.9N	126-27.2W
A	Queen Cove	4	3676	49-53N	126-59W
A	Rescue Bay	26	3711	52-31N	128-17W
C	Resolution Cove	3	3675	49-36N	126-31W
C	Retreat Cove	7	3442	48-56N	123-30W
C	Ripon Island N.W. Corner	20	3932	51-29.1N	127-39.9W
C	Rock Inlet	22	3785	51-52N	127-51W
C	Safety Cove	20	3727	51-32N	127-55W
A	Sea Otter Inlet & Crab Cove.	22	3727	51-50N	128-03W
C	Secretary Island	7	3442	48-57.7N	123-35.2W
B	Security Cove, Englefield Int	44	3865	53-04N	132-17W
A	Shelter Bay	17	3549/50	50-58N	127-27W
A	Shoal Harbour	14	3515	50-44.3N	126-30.3W
B	Small Cove, Louscoone Inlet	40	3743	52-08N	131-13W
C	Smithers Island Anchorages	29	3737	52-46N	129-04W
C	Soulsby Cove, Gowgaia Bay	41	3864	52-24N	131-33W
C	Sperm Bay, Flamingo Inlet	40	3858	52-13N	131-21W
A	Spicer Island Achorage	37	3747	53-45N	130-21.5W
A	Strachan Cove in Strachan Bay	18	3552	51-09.6N	127-28.3W
C	The Trap, Claydon Island	23	3729	52-02N	127-57W
A	Thursdon Bay Lagoon	9	3539	50-22N	125-19W
A	Tod Inlet	6	3441	48-34N	123-28W
C	Towry Head	13	3543	50-39.7N	125-30.6W
A	Treadwell Bay	17	3548/49/50/52	51-06N	127-32.2W
A	Troup Narrows	25	3720	52-17.1N	127-59.5W
A	Two Mountain Bay, Tasu Sound	43	3859	52-48N	132-00W
A	Unnamed Cove	3	3673	49-17.8N	125-58.3W
C	Valdes Bay	3	3675	49-44N	126-29W
B.	Volcanic Cove	4	3682	49-59N	127-14W
A	Waddington Bay	13	3515	50-43N	126-37W
B	Wakes Cove	8	3475	49-07.6N	123-42.2W
A.B.	Walker Group Anchorage	15	3549	50-53.9N	127-31.8W
A	Weinberg Inlet, Estevan Sound	33	3742/19	53-08N	129-32.1W
B	Windy Bay, Sheep Passage	29	3962	52-46.8N	128-12.5W
A	Winter Inlet	39	3992/94	54--48.4N	130-26W
B.C.	Zumtela Bay	39	3963	54-35N	130-22W

