

Introducing

Jim Phillips

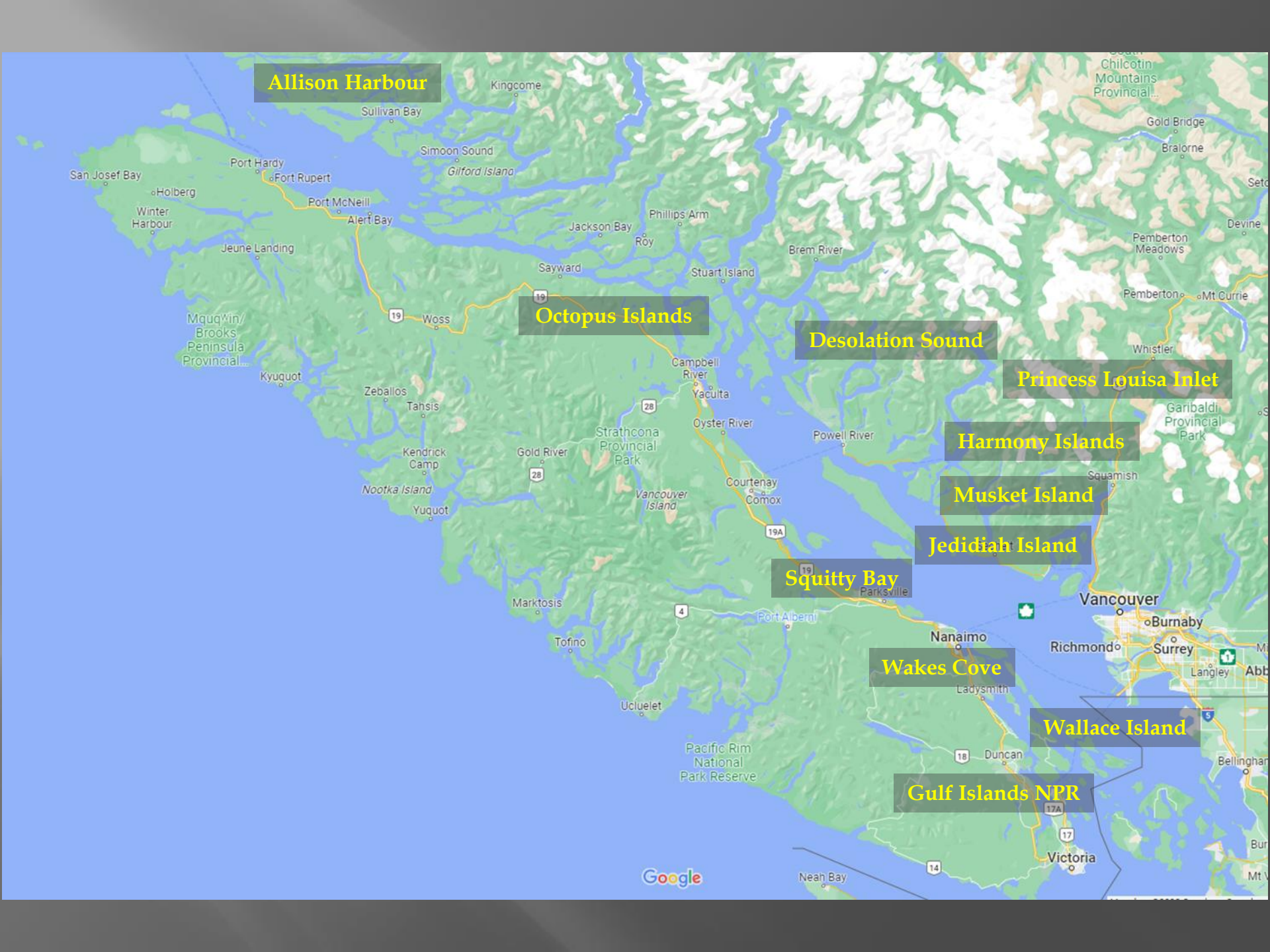
BC Marine Parks Forever
Society

Cruising the Broughtons
in Malka



World-class Cruising
Proudly supported by:





Allison Harbour

Octopus Islands

Desolation Sound

Princess Louisa Inlet

Harmony Islands

Musket Island

Jedidiah Island

Squitty Bay

Wakes Cove

Wallace Island

Gulf Islands NPR

Our Background

Founded by the Council of BC Yacht Clubs 1990

A not-for-profit society, recognized by CRA to issue tax receipts.

We work with BC Parks, BC Parks Foundation, Parks Canada and regional districts.

The first Marine Park

1958 – Montague Harbour
Marine Park



Our Purpose

- ▣ To expand and improve Marine Parks in BC. That is our SOLE focus.
- ▣ Over \$2M expended to date. BUT our money is highly leveraged with other agencies and trusts.
- ▣ ALL volunteers from various yacht clubs in BC.
- ▣ NO office space and NO paid staff!
- ▣ Over 95% of contributions go to the cause.

An aerial photograph of a coastline, likely in a tropical region, showing a mix of dark water and light-colored land. A prominent red outline highlights a specific area of land in the upper left quadrant. The land appears to be a mix of forested areas and open spaces. The water is dark, and there are some small white structures or markers visible in the water.

Harmony Island Marine Park
Purchase addition - 2018

Donation

\$749,310

Jedediah Island

Legend

Jedediah Island.
\$100,000 - 2002

Google earth

© 2010 Google
img © 2010 DigitalGlobe

2000 ft



Wales Cove - Valdes I.

Legend



Wakes Cove
\$100,000 -
2002

Google Earth
© 2019 Google

1000 ft

BC Boating Numbers per NMMA 2016

- ▣ GDP \$1,252,179,000
- ▣ Employment 16,994 jobs
- ▣ Wages \$669,020,000
- ▣ Taxes \$116,516,000
- ▣ Revenues \$112,217,984

Allison Harbour - Queen Charlotte St.

Legend



**\$200,000 -
2007**

Google earth

© 2016 Google
Image © 2016 DigitalGlobe



4000 ft

OUR FUNDING

- ▣ B.C. Yacht Clubs and members
- ▣ Private Donations by Internet and our website
- ▣ Estate Legacies

DONATION SUMMARY

▣ Pirates Cove	13,000	1962
▣ Jedidiah Isl.	100,000	2002
▣ Musket Isl.	45,000	1991
▣ Hardy Isl.	75,000	2008
▣ Wakes Cove	100,000	2002
▣ Octopus Isl.	250,000	2004
▣ Allison Harbour	200,000	2007
▣ Squitty Bay	18,000	2009
▣ Octopus Isl.	433,000	2014
▣ Harmony Island	749,310	2018
▣ Princess Louisa	50,000	2019
▣ S. Octopus Isl.	100,000	2019
▣ Ballenas Isl	50,000	2020
▣ Improvements	134,373	2015-19
▣ Total	2,317,683	



We've all done this...

RECENT STERN TIE PROJECTS

Jedediah Island Replaced 17 worn chains, several pins and added high visibility markers to each site.

Bute Island Installed 8 new stern ties complete.

Wallace Island replaced 3 and added 2 new stern ties



BC Marine Parks Forever Society

MUCH BETTER!



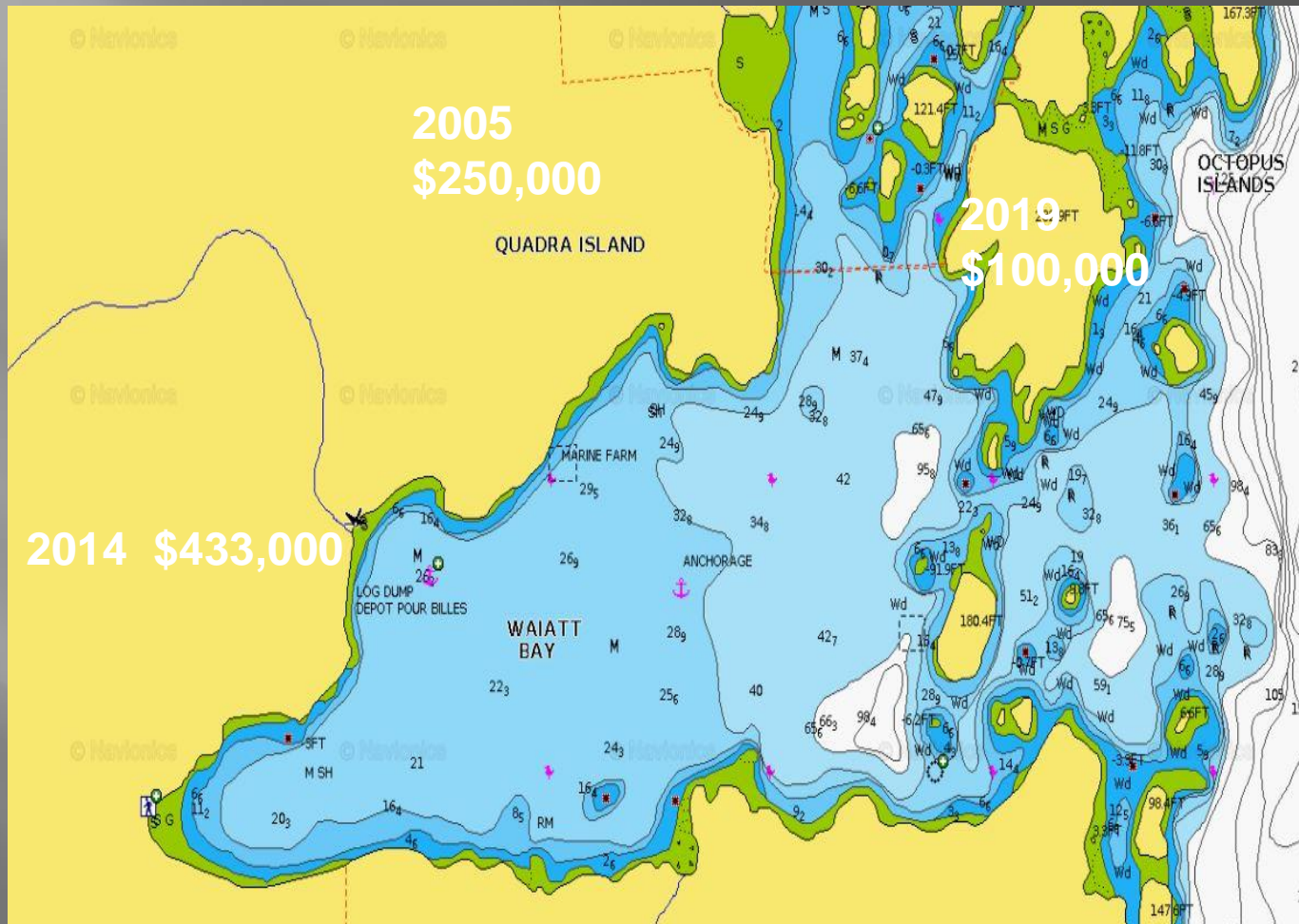


Stern Tied at Princess Cove

Infill Opportunities at Existing Parks

- ▣ North shore of Waiatt Bay – Octopus Islands?
- ▣ Wootton Bay to Portage Cove – Desolation Sound?
- ▣ Princess Cove Properties – Wallace Island?

Octopus Islands Marine Park



Total donated \$783,000

Challenges

- ▣ Popular anchorages are heavily used, and more boats are on the water each year.
- ▣ Desirable waterfront is in limited supply and increasingly expensive.
- ▣ BC Parks has conflicting priorities, and acquisition money is stretched.
- ▣ Expensive archeological assessments now required for anything new.
- ▣ Indigenous issues now complicate all aspects of operations/acquisitions.

Teaming: BC Parks Foundation

- Province of BC biodiversity fund \$150m
- Wilson 5 Foundation \$100m

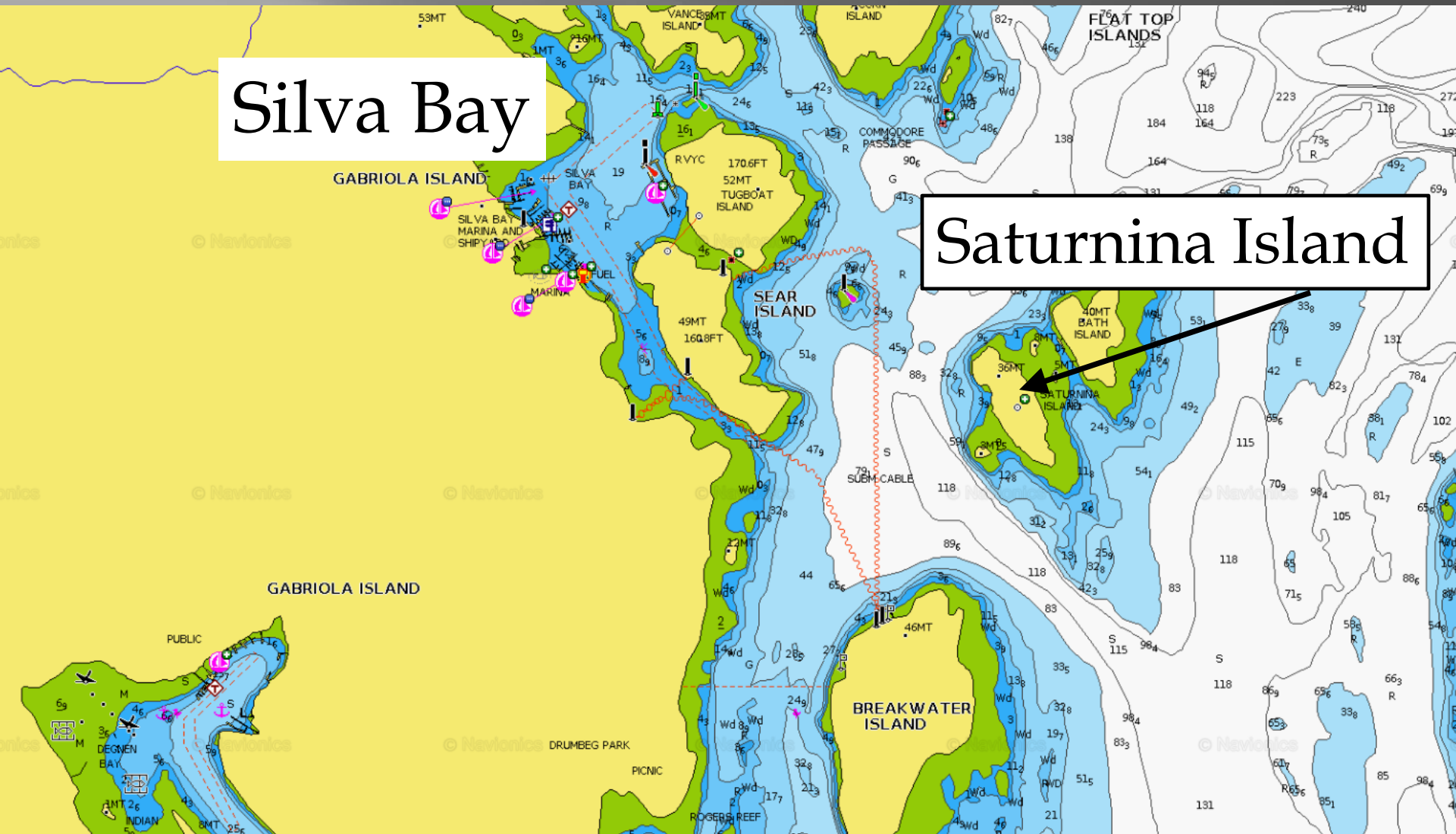
Princess Louisa Inlet addition \$50,000 - 2019



Saturnina

Silva Bay

Saturnina Island

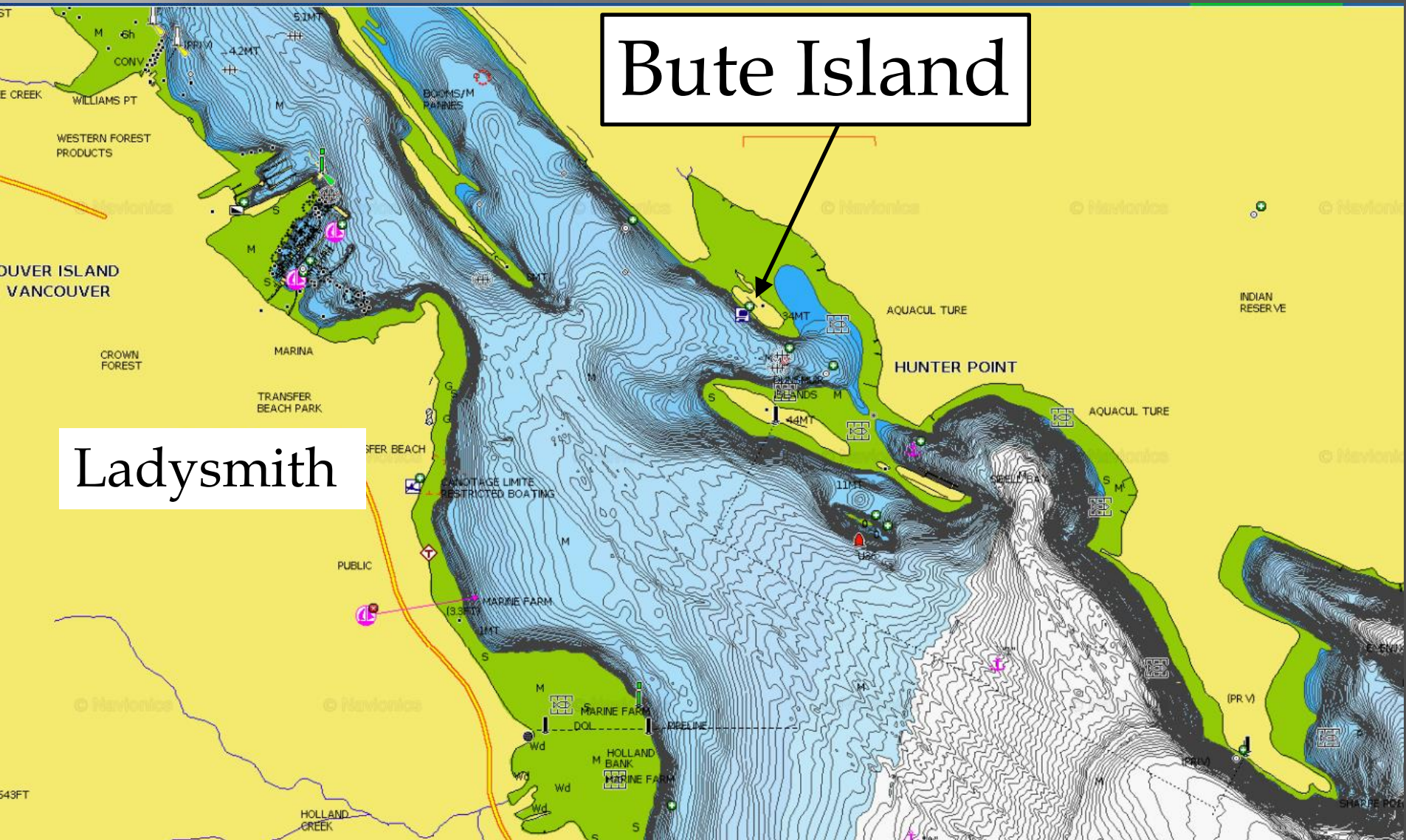


Regional District Parks

- Bute Island in Ladysmith Harbour is a good model
- We funded eight stern ties
- Pitching to other regional districts on the coast

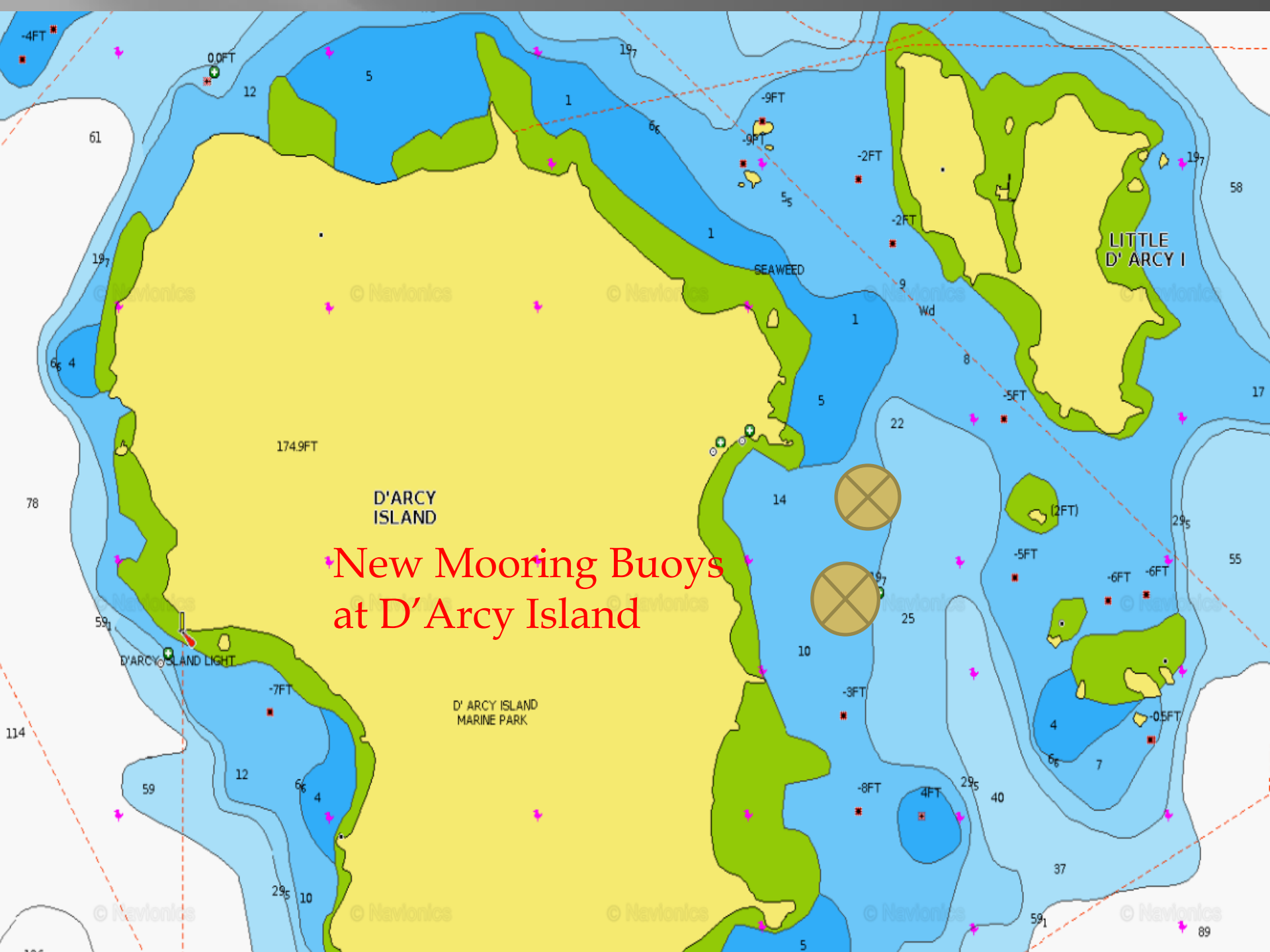
Bute Island

Ladysmith



Parks Canada: Federal Marine Parks

- New mooring buoys at D'Arcy Island
- Looking at new stern ties for popular anchorages



**New Mooring Buoys
at D'Arcy Island**

174.9FT

D'ARCY ISLAND

D'ARCY ISLAND LIGHT

D' ARCY ISLAND MARINE PARK

SEAWEED

LITTLE D' ARCY I

Wd

SUMMARY

- ▣ MPFS is an enduring cruising investment for today and for generations to come.
- ▣ MPFS has extremely low overhead and leverages its funds for maximum effect.
- ▣ Marine Parks are great value and inexpensive for us to enjoy.
- ▣ Let's create a Legacy that makes us proud!

QUESTIONS?



Go to:

<https://www.bcmpfs.ca/>



**Thank You
for Your
Attention & Support**