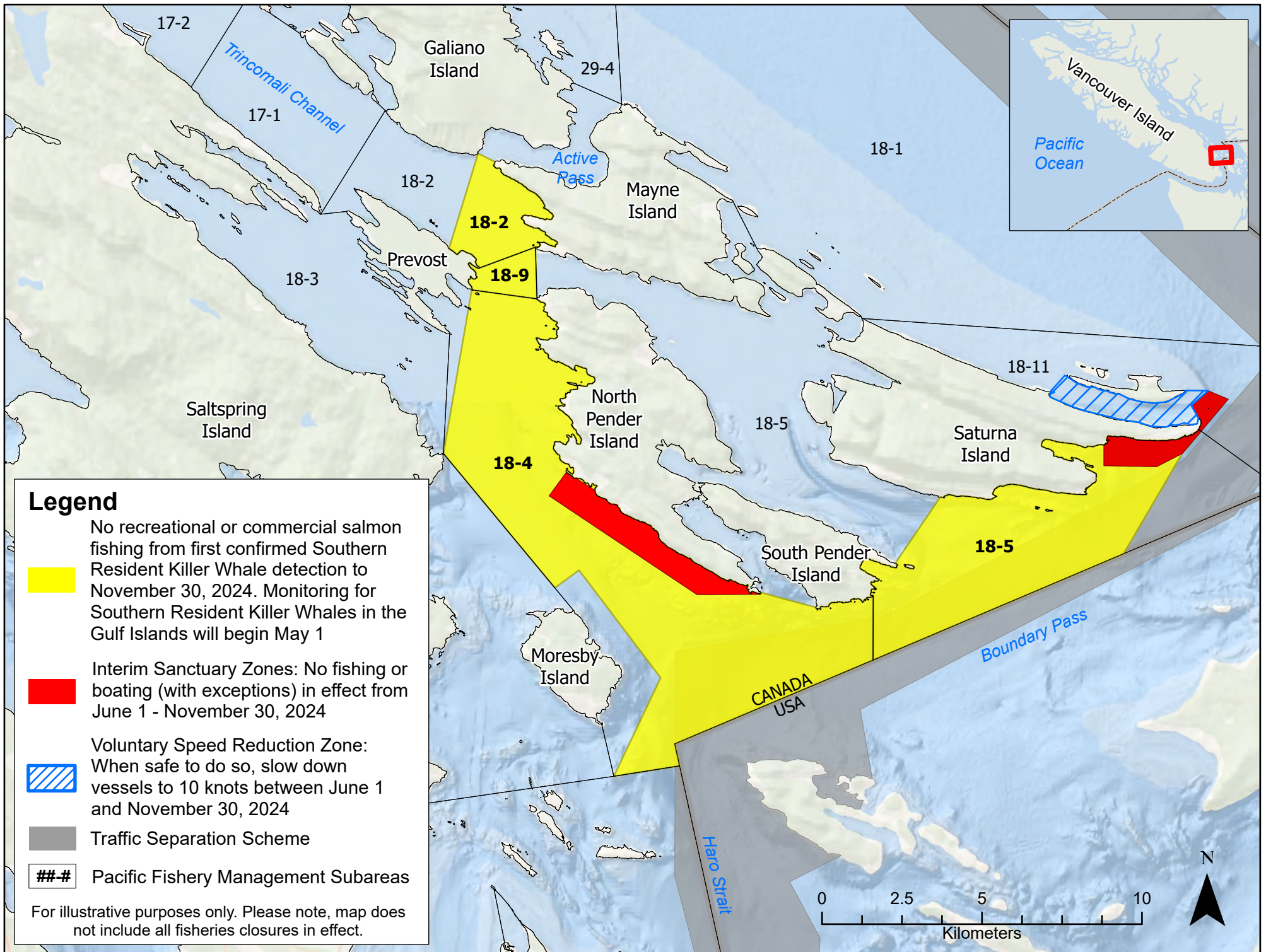


**Legend**

- No recreational or commercial salmon fishing in effect August 1 - September 30, 2024
- Traffic Separation Scheme
- ##-# Pacific Fishery Management Subareas

For illustrative purposes only. Please note, map does not include all fisheries closures in effect.

**2024 Mouth of Fraser management measures**

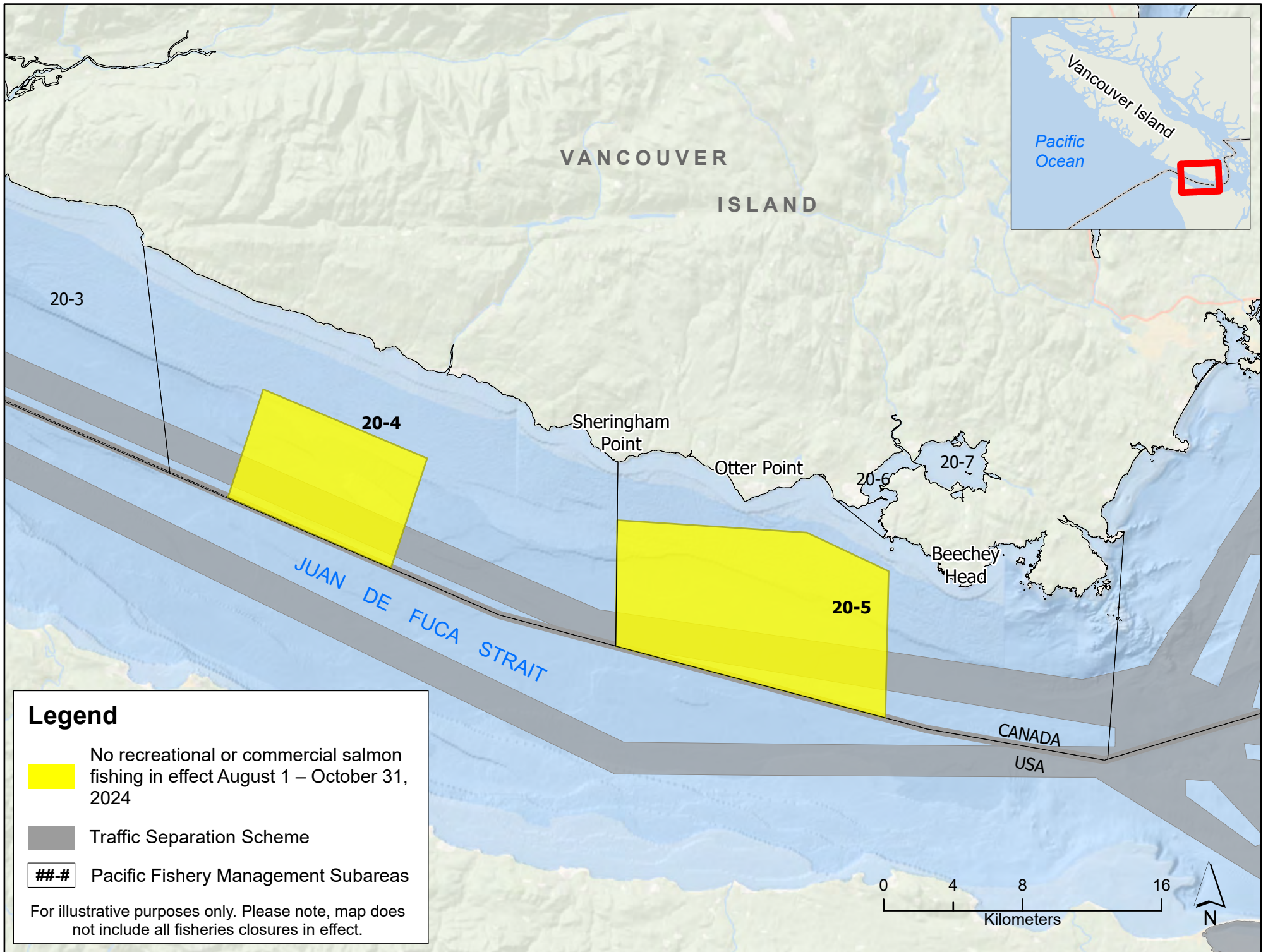


**Legend**

- No recreational or commercial salmon fishing from first confirmed Southern Resident Killer Whale detection to November 30, 2024. Monitoring for Southern Resident Killer Whales in the Gulf Islands will begin May 1
  - Interim Sanctuary Zones: No fishing or boating (with exceptions) in effect from June 1 - November 30, 2024
  - Voluntary Speed Reduction Zone: When safe to do so, slow down vessels to 10 knots between June 1 and November 30, 2024
  - Traffic Separation Scheme
  - Pacific Fishery Management Subareas
- For illustrative purposes only. Please note, map does not include all fisheries closures in effect.

**2024 Gulf Islands management measures**



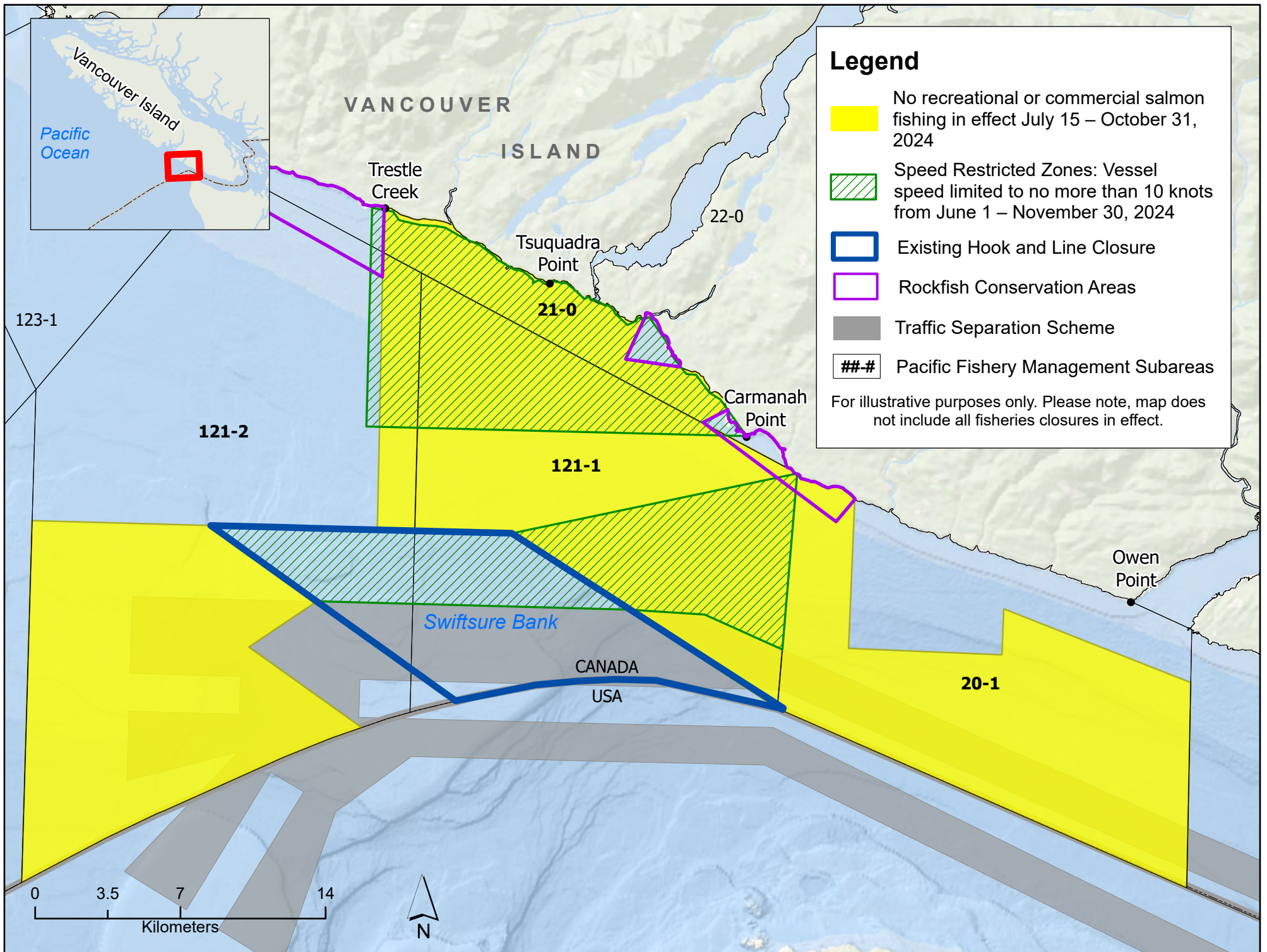


**Legend**

- No recreational or commercial salmon fishing in effect August 1 – October 31, 2024
- Traffic Separation Scheme
- ### Pacific Fishery Management Subareas

For illustrative purposes only. Please note, map does not include all fisheries closures in effect.

**2024 Juan de Fuca management measures**



### Legend

- No recreational or commercial salmon fishing in effect July 15 – October 31, 2024
- Speed Restricted Zones: Vessel speed limited to no more than 10 knots from June 1 – November 30, 2024
- Existing Hook and Line Closure
- Rockfish Conservation Areas
- Traffic Separation Scheme
- ##-# Pacific Fishery Management Subareas

For illustrative purposes only. Please note, map does not include all fisheries closures in effect.

**2024 Swiftsure Bank management measures**