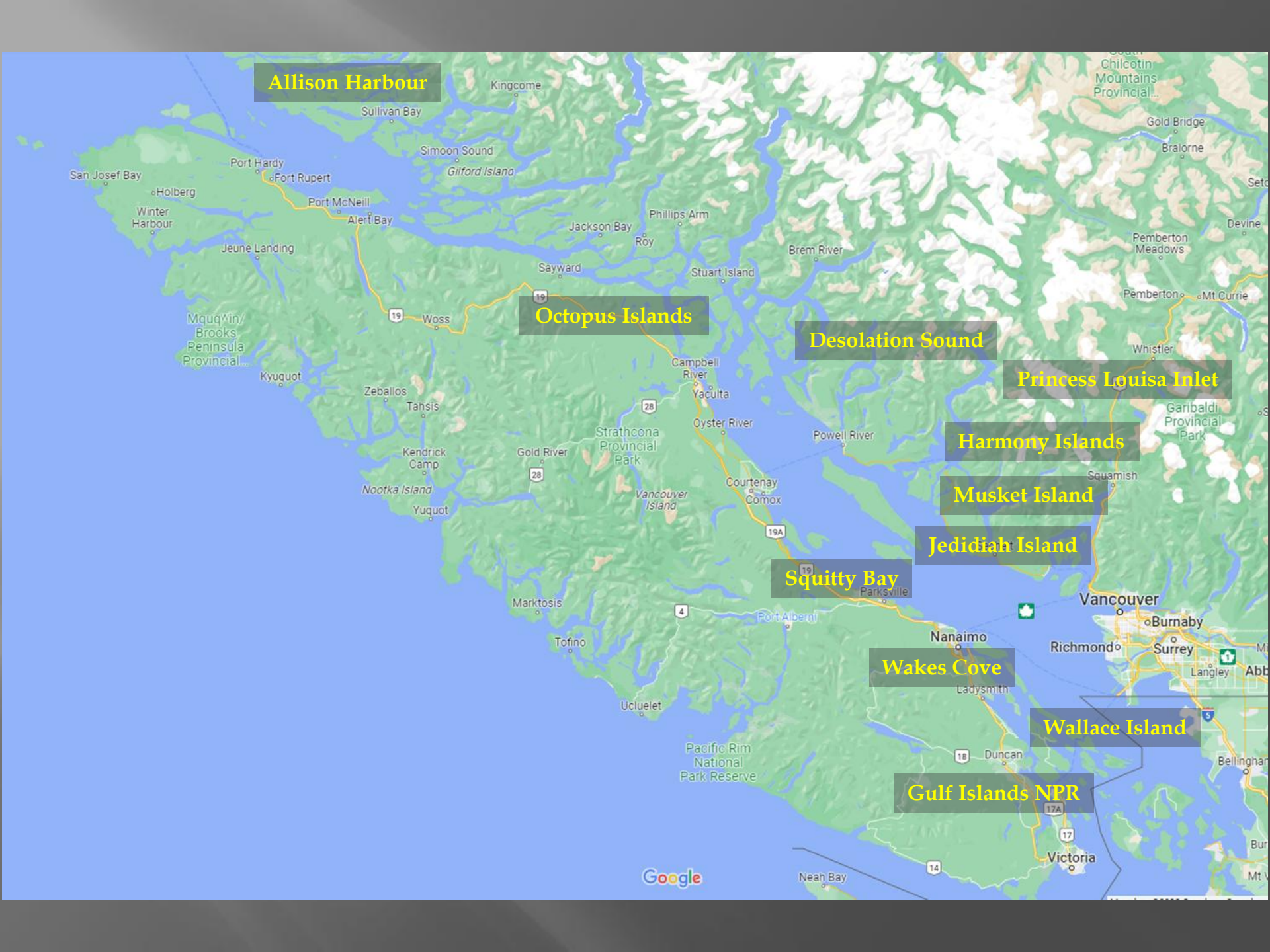


# B.C. Marine Parks Forever Society



World-class Cruising  
Proudly supported by:





**Allison Harbour**

**Octopus Islands**

**Desolation Sound**

**Princess Louisa Inlet**

**Harmony Islands**

**Musket Island**

**Jedidiah Island**

**Squitty Bay**

**Wakes Cove**

**Wallace Island**

**Gulf Islands NPR**

# Our Background

Founded by the Council of BC Yacht Clubs 1990

A not-for-profit society, recognized by CRA to issue tax receipts.

We work with BC Parks, BC Parks Foundation, Parks Canada and Regional Districts.

**Boating organizations, (Yacht Clubs,  
Sailing Clubs, Co-ops)**



**Council of BC Yacht Clubs**



**BC Marine Parks Forever Society**

# The first Marine Park

## 1958 - Montague Harbour



# Our Purpose

- ▣ To expand and improve Marine Parks in BC. That is our SOLE focus.
- ▣ Over \$2.6 M expended to date. Our money is highly leveraged with other agencies and trusts.
- ▣ ALL volunteers from various yacht clubs in BC.
- ▣ NO office space and NO paid staff!
- ▣ Over 95% of contributions go to the cause.

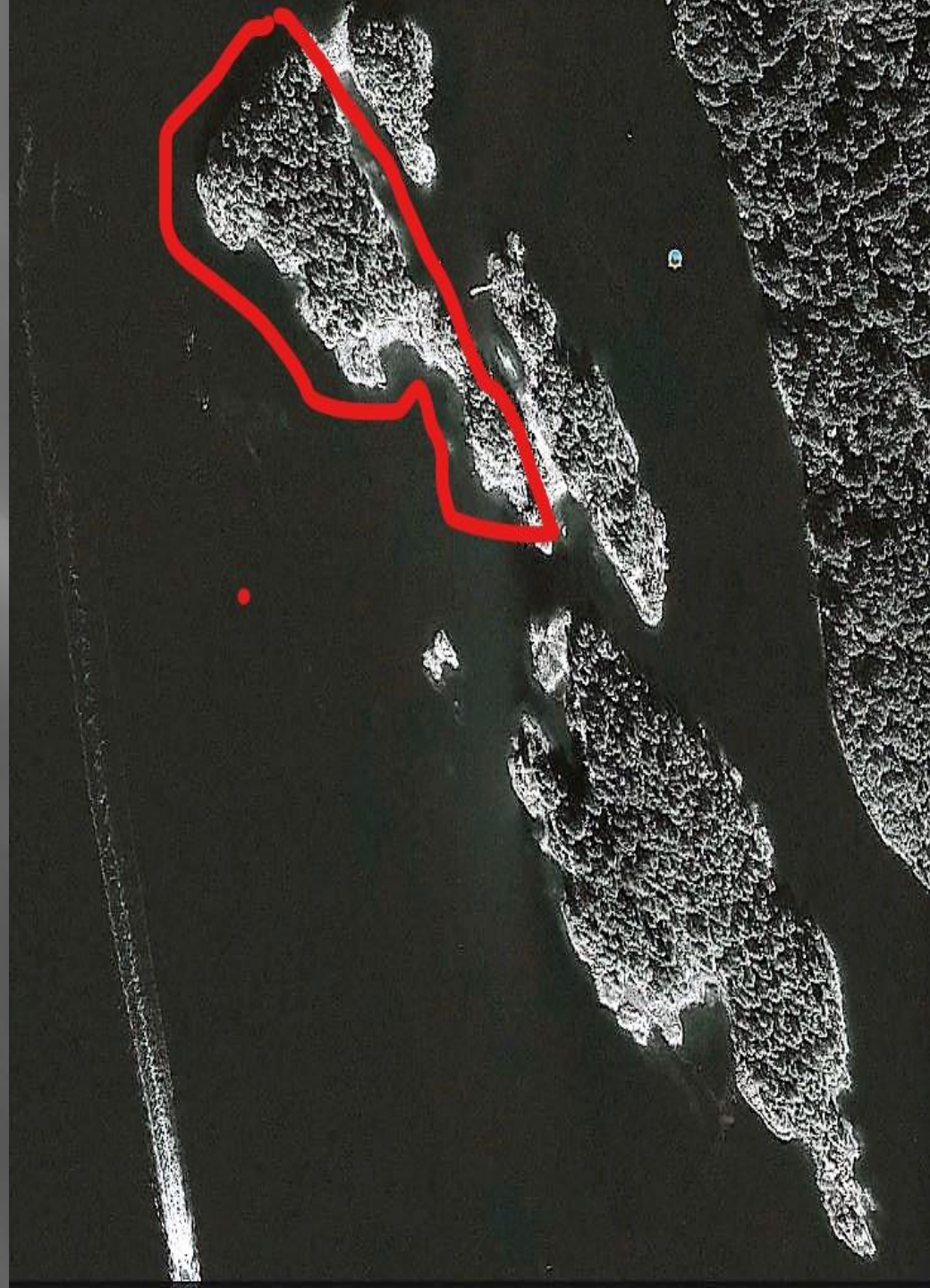
# Connections

- ▣ Park Host Program - BC Parks superintendents
- ▣ Gulf Islands National Park Reserve – Parks Canada superintendents
- ▣ BC Marine Trails – paddlers and First Nations
- ▣ Outdoor Recreation Council of BC
- ▣ Princess Louisa International Society
- ▣ Recreational Boating Association of Washington

# Harmony Islands Marine Park

Additional  
purchase in 2018

**\$749,310**



Jedediah Island

Legend

Jedediah Island.  
**\$100,000 - 2002**

Google earth

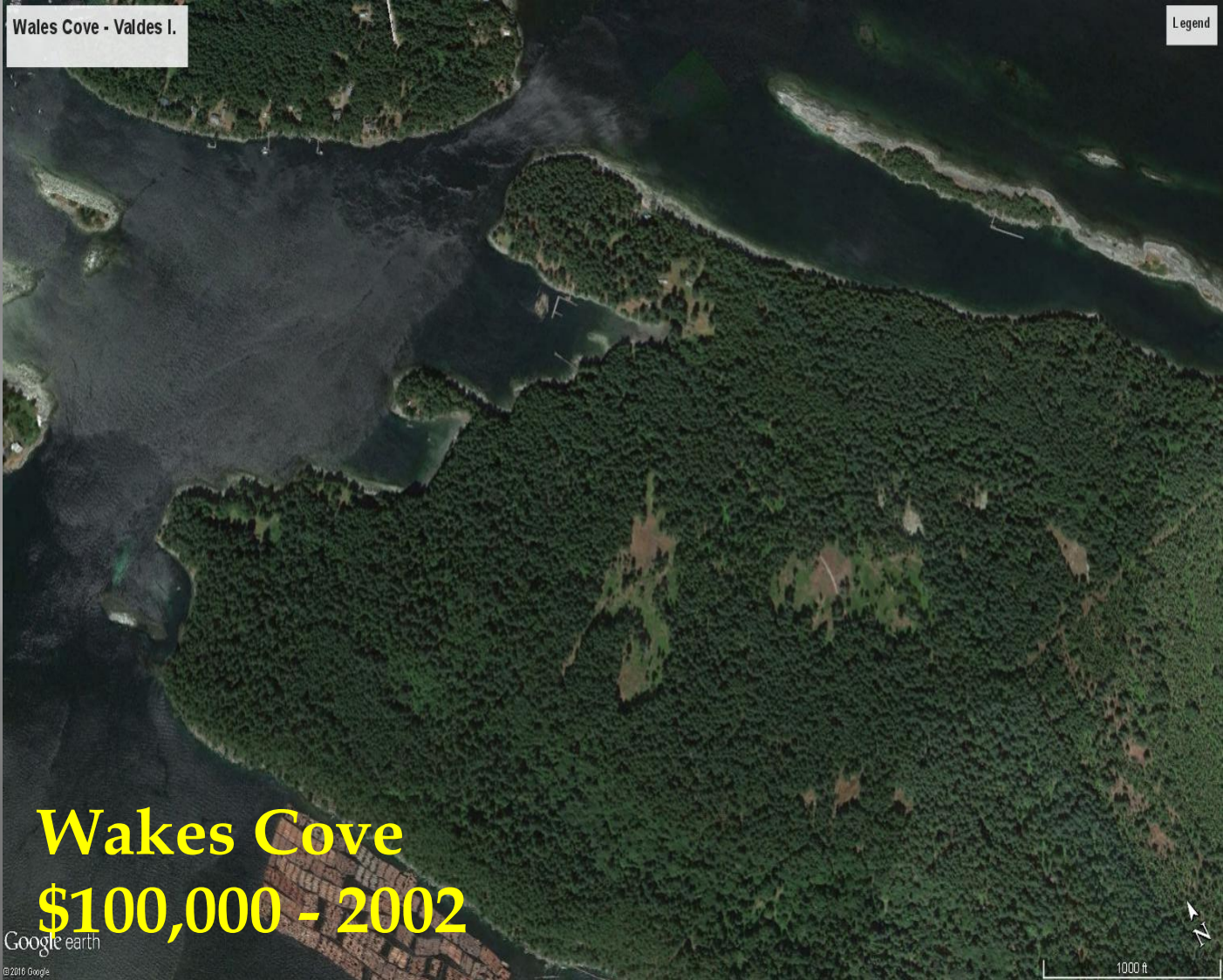
© 2010 Google  
img © 2010 DigitalGlobe

2000 ft



Wales Cove - Valdes I.

Legend



**Wakes Cove**  
**\$100,000 - 2002**

Google earth  
© 2010 Google

1000 ft



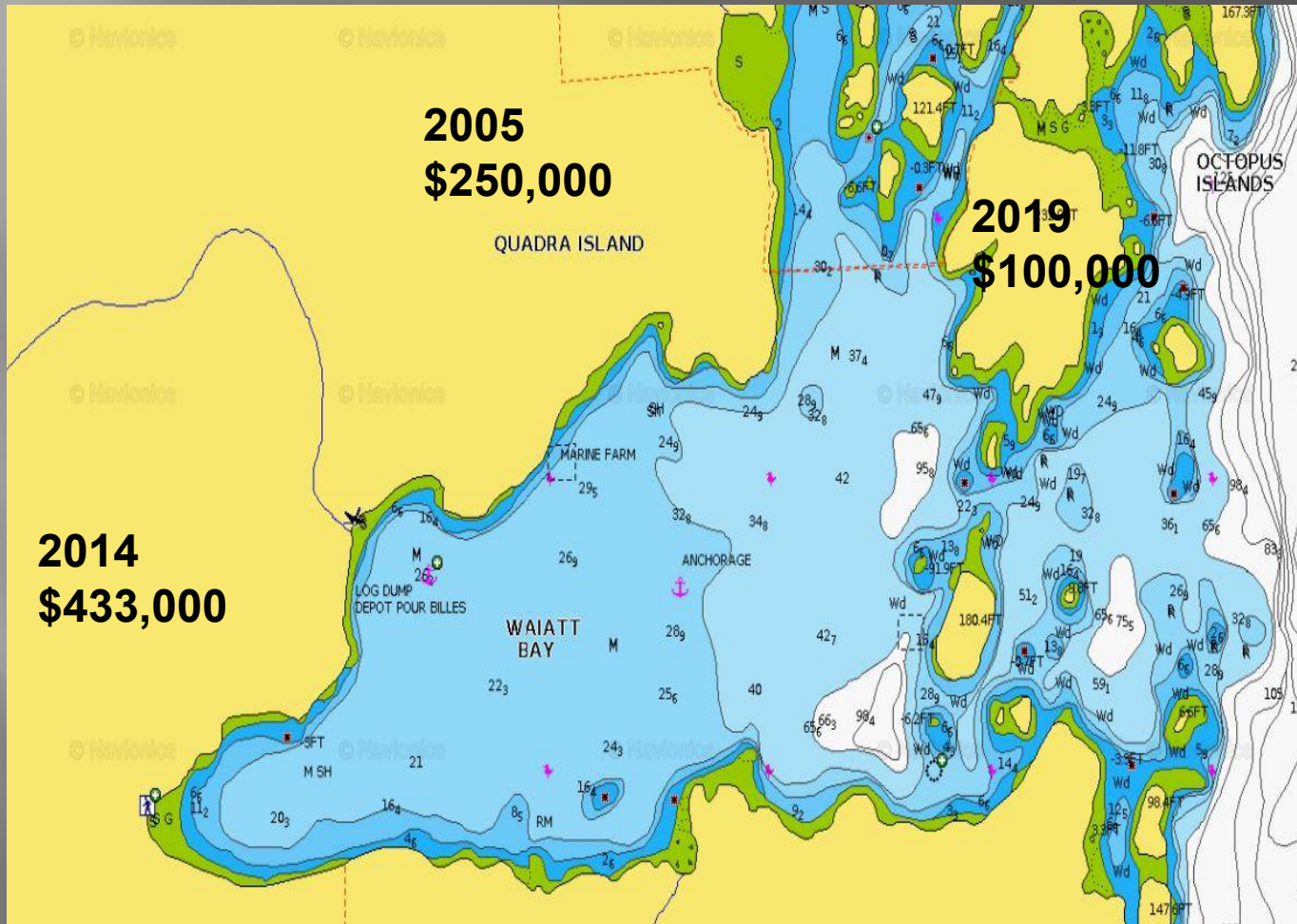


**Allison Harbour**

**\$200,000 in 2007**



# Octopus Islands



**Total donated**

**\$783,000**

# OUR FUNDING

- ▣ B.C. Yacht Clubs and members
- ▣ Conservation Trust Funds
- ▣ Private donations through our website
- ▣ Estate Legacies

# DONATION SUMMARY

▣	Pirates Cove	13,000	1962
▣	Musket Island	45,000	1992
▣	Jedidiah Island	100,000	1995
▣	Hardy Island	75,000	1997
▣	Wakes Cove	100,000	2002
▣	Octopus Islands	250,000	2004
▣	Allison Harbour	200,000	2007
▣	Squitty Bay	18,000	2007
▣	Quadra/Octopus Islands	433,000	2014
▣	Harmony Islands	749,310	2018
▣	Princess Louisa	50,000	2019
▣	Octopus Islands	100,000	2019
▣	West Ballenas Island	50,000	2020
▣	Improvements & Stern Ties	150,741	2015-25
▣	Saturna Island	200,000	2025
▣	Prideaux Haven	100,000	2025
▣	<b>Total</b>	<b>2,634,051</b>	



Oyster shells, slippery rocks...

We've all done this.

**MUCH BETTER!  
CONVENIENT  
SAFER ANCHORING**



# RECENT STERN TIE PROJECTS

Jedediah Island replaced 17 worn chains, several pins and added high visibility markers to each site.

Bute Island Installed 8 new stern ties.

Wallace Island replaced 3 and added 2 new stern ties



**Stern Tied at Princess Cove**

# Challenges

- ▣ Popular anchorages are heavily used, and more boats are on the water each year.
- ▣ Desirable waterfront is in limited supply and increasingly expensive.
- ▣ BC Parks & Parks Canada have conflicting priorities: Acquisition & maintenance money is stretched.
- ▣ Stern tie projects have been delayed pending Government/First Nations consultations.

# Teaming: BC Parks Foundation

- Province of BC biodiversity fund \$150m
- Wilson 5 Foundation \$100m

# Princess Louisa Inlet expansion

\$50,000 in 2019

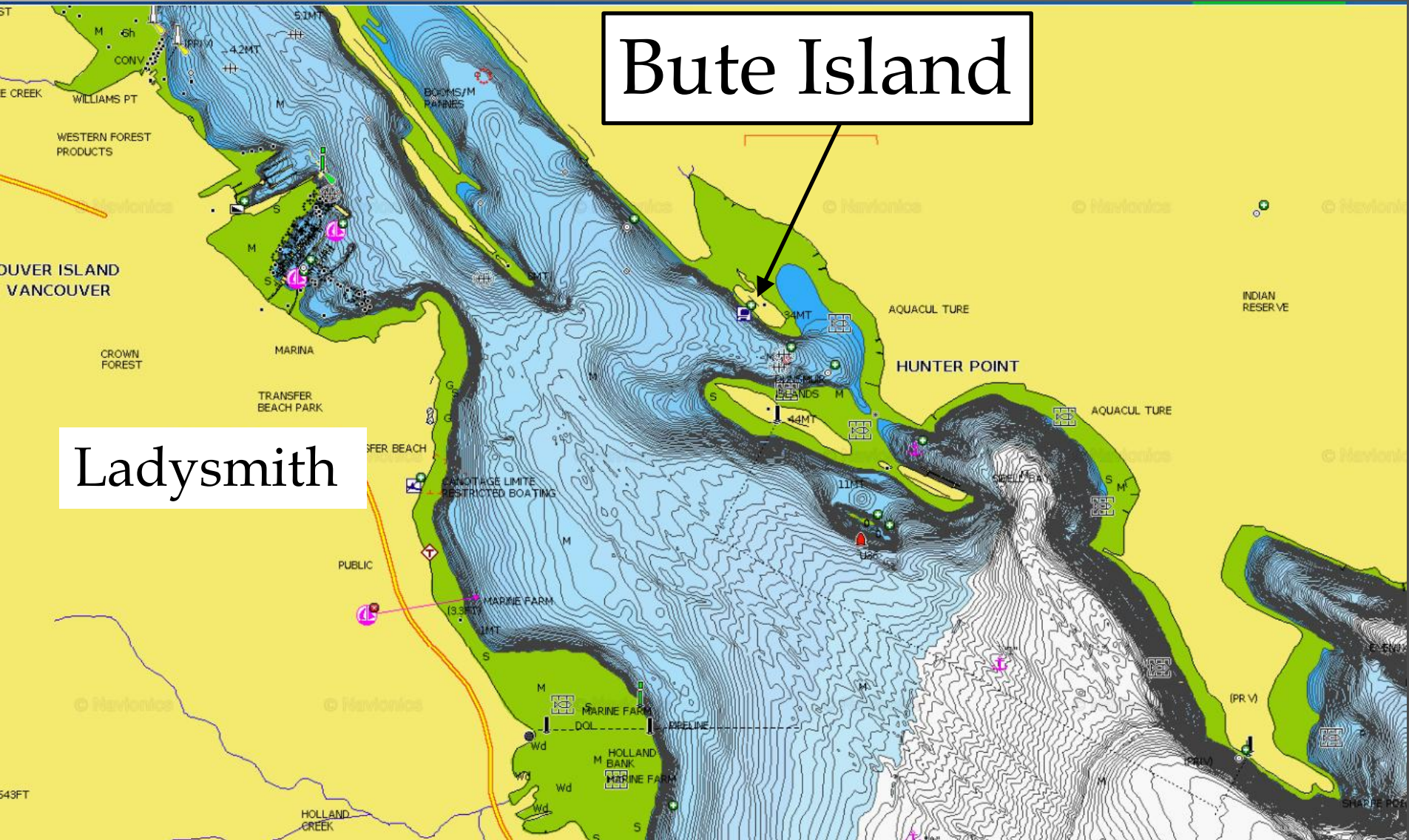


# Regional District Parks

- Bute Island in Ladysmith Harbour is a good model
- We funded eight stern ties
- We're pitching to other regional districts

# Bute Island

# Ladysmith



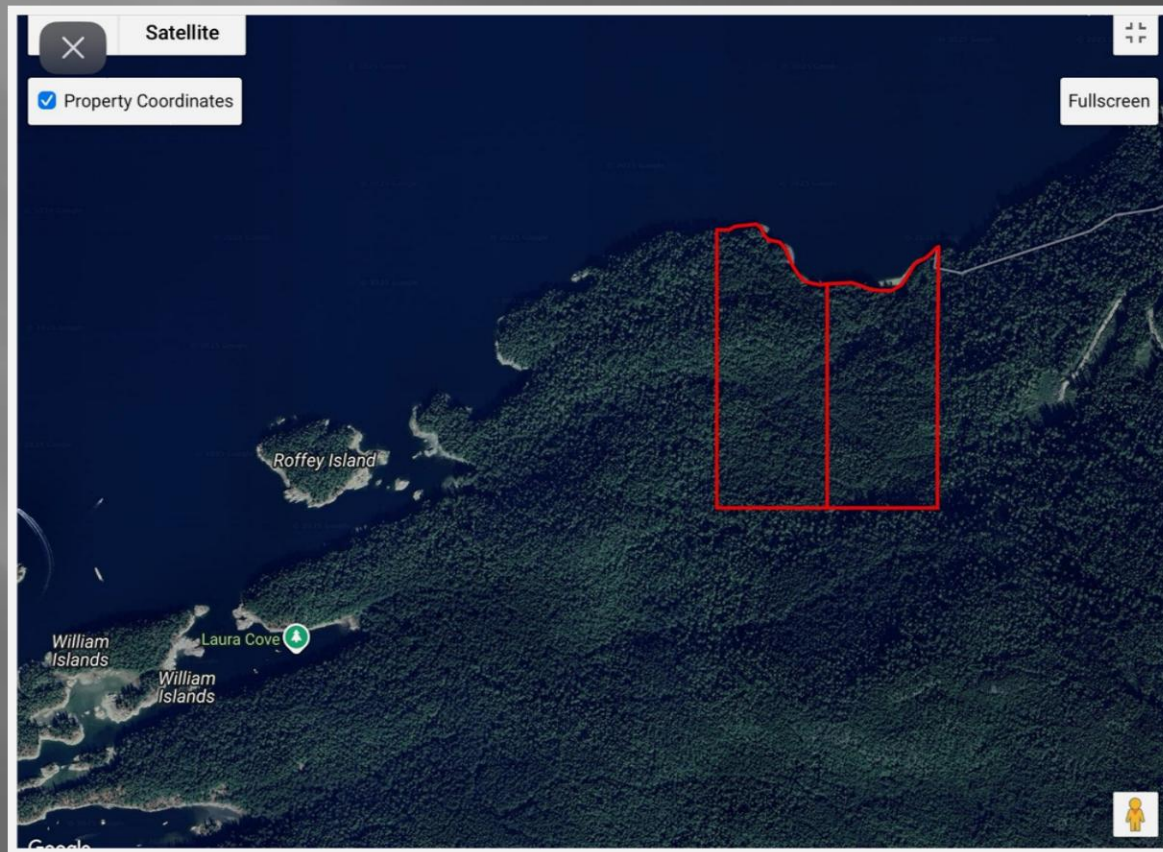
# Parks Canada: Federal Marine Parks

- New mooring buoys at D'Arcy Island
- Looking at new stern ties for other popular anchorages
- Saturna Island +372 acres  
+3km of shoreline

# Cruising & Marine Parks

- ▣ Think of a side trip to Musket Island, Harmony Islands and Princess Louisa on your way to an anchorage at Prideaux Haven.
- ▣ Relax for a few days at Octopus Islands and hike to the lake before tackling Johnstone Strait on your way to the Broughtons.
- ▣ Anchor at Narvaez Bay, explore the protected areas on Saturna Island and watch for Orcas.

# New Desolation Sound property: 100 Acres at Eastern boundary of the park, with waterfront on Homfray Channel





Saturna Island – Eastern End

# SATURNA

IR

Fiddlers C

(11)

# ISLAND

## Narvaez Bay

## Monarch Hd

## Bruce Bight

Taylor Pt

Java Its

**Location:** Southern Gulf Islands

**Size:** 372 acres

**Cost:** \$5,080,000

**First Nation Territory:** W'SANEC; Tsawwassen

**BEC Zone:** CDFmm

**Cost per Acre:** \$13,634



# Club Contributions

▣ 2021	\$61,000	
▣ 2022	\$67,000	
▣ 2023	\$41,000	
▣ 2024	\$60,000	Thanks, RVicYC!
▣ 2025	\$47,000	

# SUMMARY

- ▣ MPFS is an enduring cruising investment.
- ▣ MPFS has extremely low overhead and leverages its funds for maximum effect.
- ▣ Marine Parks are great value and inexpensive for us to enjoy.

# QUESTIONS?



Go to:

<https://www.bcmpfs.ca/>



**Your club's support  
for our parks greatly  
appreciated!**